

PROJECT NAME: SNOW SCOOTER BRIDGE
I-395/ROUTE 9 CONNECTOR
PROJECT LOCATION: BREWER – EDDINGTON, ME
AGENCY/MUNICIPALITY: MEDOT
PROJECT JOB NO: WIN 018915.50
PREPARED FOR: STATE OF MAINE
ENGINEER: MEDOT
ENGINEER PROJ. NO: N/A
JOB SPECIFICATIONS: SPECIAL PROVISION SECTION 534
PRECAST STRUCTURAL CONCRETE
DRAWINGS: SNOW SCOOTER BRIDGE
SHEET 2 OF 7
OTHER INFORMATION: N/A
PREPARED BY: CONCRETE SYSTEMS INC.
CSI JOB NO: C24548

DRAWING INDEX			
SHEET NO:	DESCRIPTION	REVISION NO.	REV. DATE
1	TITLE SHEET	1	09/17/2021
2	BOX CULVERT LAYOUT PLAN & SIDE ELEVATION	1	09/17/2021
3	CULVERT END ELEVATION & TYPICAL END SECTION	1	09/17/2021
4	CULVERT TYPICAL DETAILS	0	08/13/2021
5	INDIVIDUAL PIECE SHOP DRAWING A1	1	09/17/2021
6	INDIVIDUAL PIECE SHOP DRAWING A2	0	08/17/2021
7	INDIVIDUAL PIECE SHOP DRAWING A3	0	08/17/2021
8	INDIVIDUAL PIECE SHOP DRAWING A4	1	09/17/2021
9	INDIVIDUAL PIECE SHOP DRAWING A5	1	09/17/2021
10	INDIVIDUAL PIECE SHOP DRAWING A6	1	09/17/2021
11	INDIVIDUAL PIECE SHOP DRAWING A7	1	09/17/2021
12	INDIVIDUAL PIECE SHOP DRAWING A8	1	09/17/2021
13	INDIVIDUAL PIECE SHOP DRAWING A9	1	09/17/2021
14	INDIVIDUAL PIECE SHOP DRAWING A10	1	09/17/2021

Contractor is to verify that all information shown on drawings has been thoroughly checked, complies with the contract documents and is adequate to meet the field conditions. Some dimensions and details may differ slightly from contract drawings to accommodate the manufacturing or design process. Approval of this drawing indicates that any deviation from the contract documents has been reviewed and found to be acceptable. Production will not commence until receipt of signed, approved shop drawings.

This drawing contains information proprietary to CONCRETE SYSTEMS, INC. This drawing is disclosed with the understanding that it will be retained in confidence and its use limited solely to the purpose for which it is disclosed. It is understood that no reproduction of this drawing is authorized without permission from CONCRETE SYSTEMS, INC. and that it will be returned to CONCRETE SYSTEMS, INC. upon request.



CONCRETE SYSTEMS, INC.


9 Commercial Street, Hudson, New Hampshire 03051
(800) 342-3374 (603) 889-4163
FAX (603) 889-0039 www.csigroup.com

Stamp for structural design of precast only

STATE OF MAINE
DEPARTMENT OF TRANSPORTATION
☒ REVIEWED ☐ REVIEWED WITH COMMENTS
☐ REJECTED ☐ REVISE AND RESUBMIT

Sep 22, 2021

THIS DOCUMENT WAS REVIEWED IN ACCORDANCE WITH STATE OF MAINE SPECIFICATION SECTION 105.7 WORKING DRAWINGS

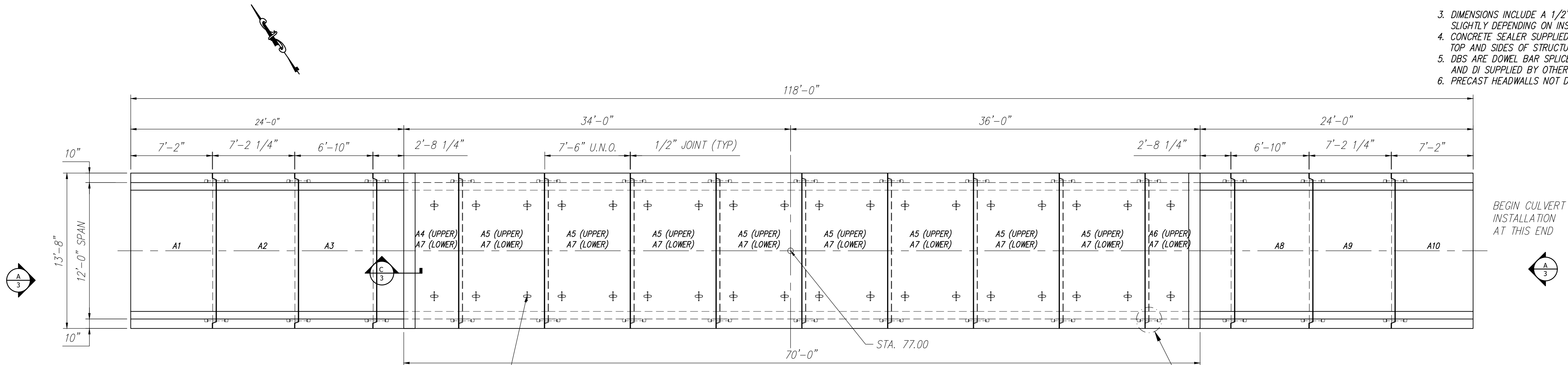


Transportation Engineer II

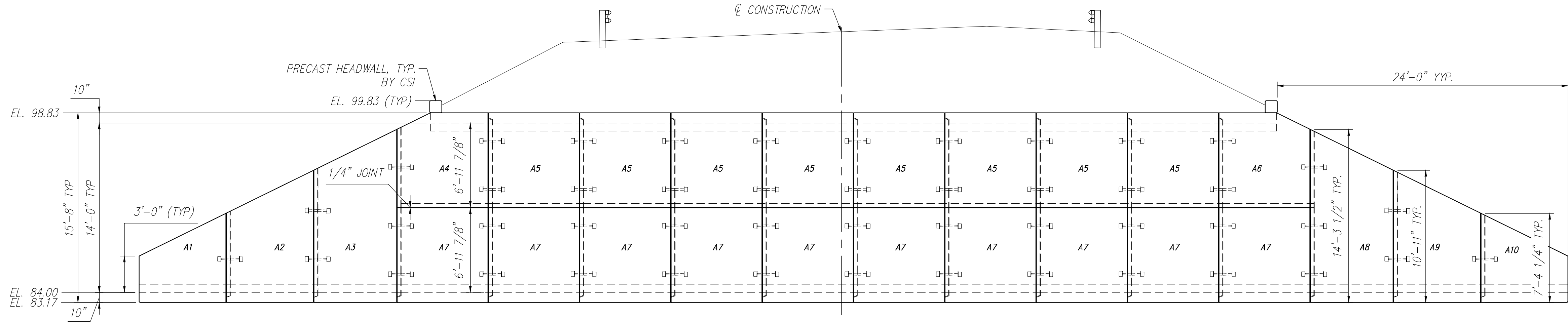
NAME

TITLE

- CULVERT GENERAL NOTES:
- REFERENCE STANDARDS:
AASHTO "LRFD BRIDGE DESIGN SPECIFICATIONS"
ASTM C1577
 - DESIGN PARAMETERS:
LIVE LOAD: HI-93 MAINE MODIFIED
CONSTRUCTION LOAD HS20 WITH 18" EARTH COVER
EARTH COVER: 5.67' TO 6.99'±
CONCRETE: DESIGN STRENGTH F'C = 5000 PSI
UNIT WEIGHT = 150 PCF
3 GAL/CY CORROSION INHIBITOR
REINFORCING: ASTM A615 (REBAR), GRADE 60, BLACK
SOIL: UNIT WEIGHT = 120 PCF
MINIMUM LATERAL = 30 PCF
MAXIMUM LATERAL = 60 PCF
COVER TO REINFORCING: 2" OUTSIDE
1 1/2" INSIDE
 - DIMENSIONS INCLUDE A 1/2" JOINT CREEP. OVERALL CULVERT LENGTH WILL VARY SLIGHTLY DEPENDING ON INSTALLATION.
 - CONCRETE SEALER SUPPLIED & APPLIED BY CSI. CONCRETE SEALER APPLIED ON TOP AND SIDES OF STRUCTURE TO BE CER-TIVEX PENSEAL 244-100%.
 - DBS ARE DOWEL BAR SPLICERS AND DI ARE DOWEL INS. DBS ARE SUPPLIED BY CSI AND DI SUPPLIED BY OTHERS.
 - PRECAST HEADWALLS NOT DESIGNED FOR IMPACT LOAD.



PIECE SCHEDULE (MX-FA5000SC30)				
MARK	QTY	LENGTH	YDS	WEIGHT
A1	1	7.17	5.41	10.95 TONS
A2	1	7.18	6.83	13.83 TONS
A3	1	6.83	7.96	16.12 TONS
A4*	1	7.50	5.84	11.83 TONS
A5	8	7.50	6.65	13.47 TONS
A6*	1	7.50	5.84	11.83 TONS
A7	10	7.50	6.65	13.47 TONS
A8	1	6.83	7.96	16.12 TONS
A9	1	7.18	6.83	13.83 TONS
A10	1	7.17	5.08	10.30 TONS
*WEIGHTS INCLUDES HEADWALL				



STATE OF MAINE DEPARTMENT OF TRANSPORTATION	
<input checked="" type="checkbox"/> REVIEWED	<input type="checkbox"/> REVIEWED WITH COMMENTS
<input type="checkbox"/> REJECTED	<input type="checkbox"/> REVISE AND RESUBMIT
Sep 22, 2021	
THIS DOCUMENT WAS REVIEWED IN ACCORDANCE WITH 97 STATE OF MAINE SPECIFICATION SECTION 05.17 WORKING DRAWINGS	
	Transportation Engineer
NAME	TITLE

Contractor is to verify that all information shown on drawings has been thoroughly checked, complies with the contract documents and is adequate to meet the field conditions. Some dimensions and details may differ slightly from contract drawings to accommodate the manufacturing or design process. Approval of this drawing indicates that any deviation from the contract documents has been reviewed and found to be acceptable. Production will not commence until receipt of signed, approved shop drawings.

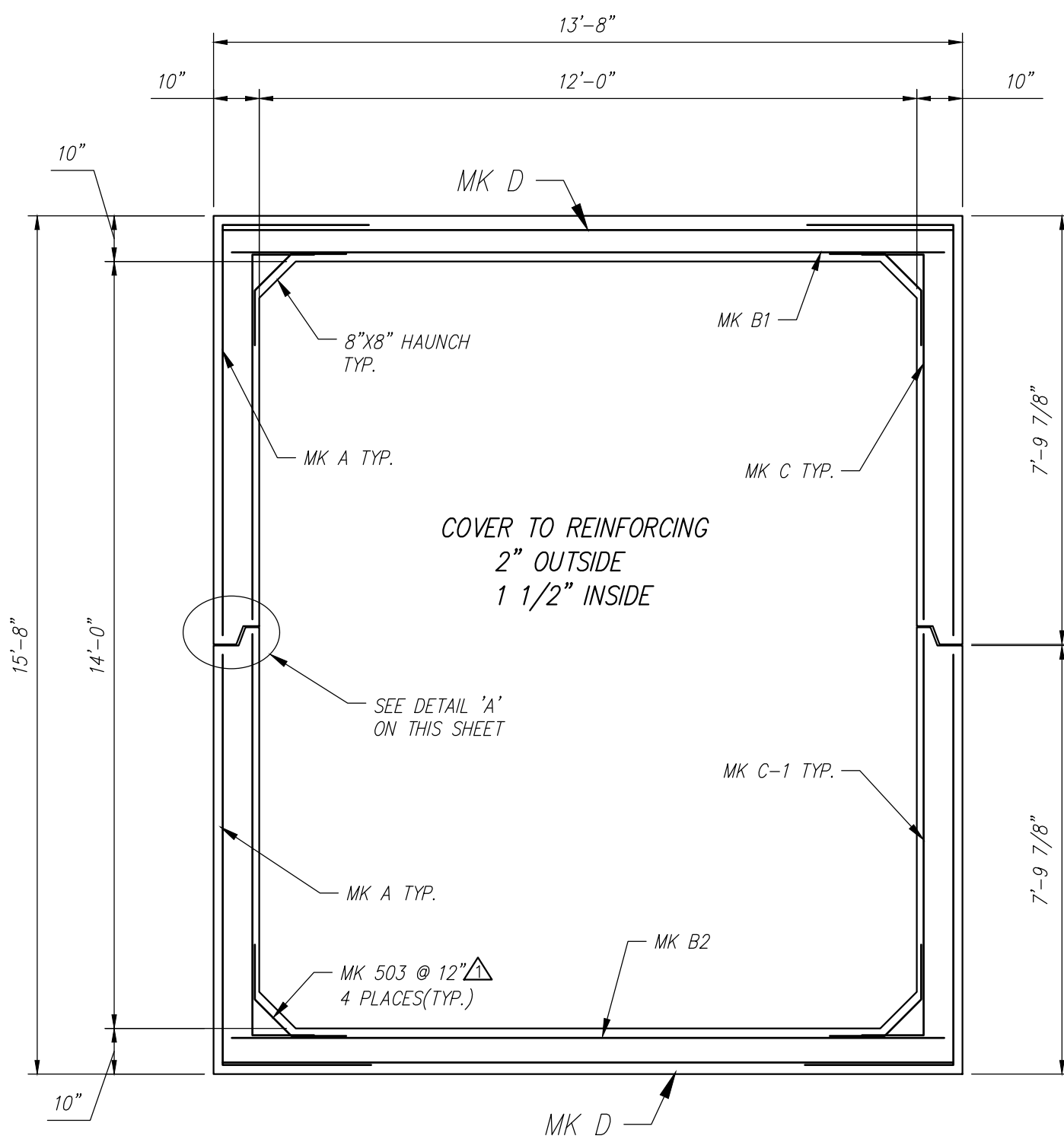
This drawing contains information proprietary to CONCRETE SYSTEMS, INC. This drawing is disclosed with the understanding that it will be retained in confidence and its use limited solely to the purpose for which it is disclosed. It is understood that no reproduction of this drawing is authorized without permission from CONCRETE SYSTEMS, INC. and that it will be returned to CONCRETE SYSTEMS, INC. upon request.

10				
9				
8				
7				
6				
5				
4				
3				
2				
1	09/13/2021	REVISED PIECE SCHEDULE & REMOVE TOE WALLS	YAA	
Rev.	Date	DESCRIPTION	By	
REVISIONS				

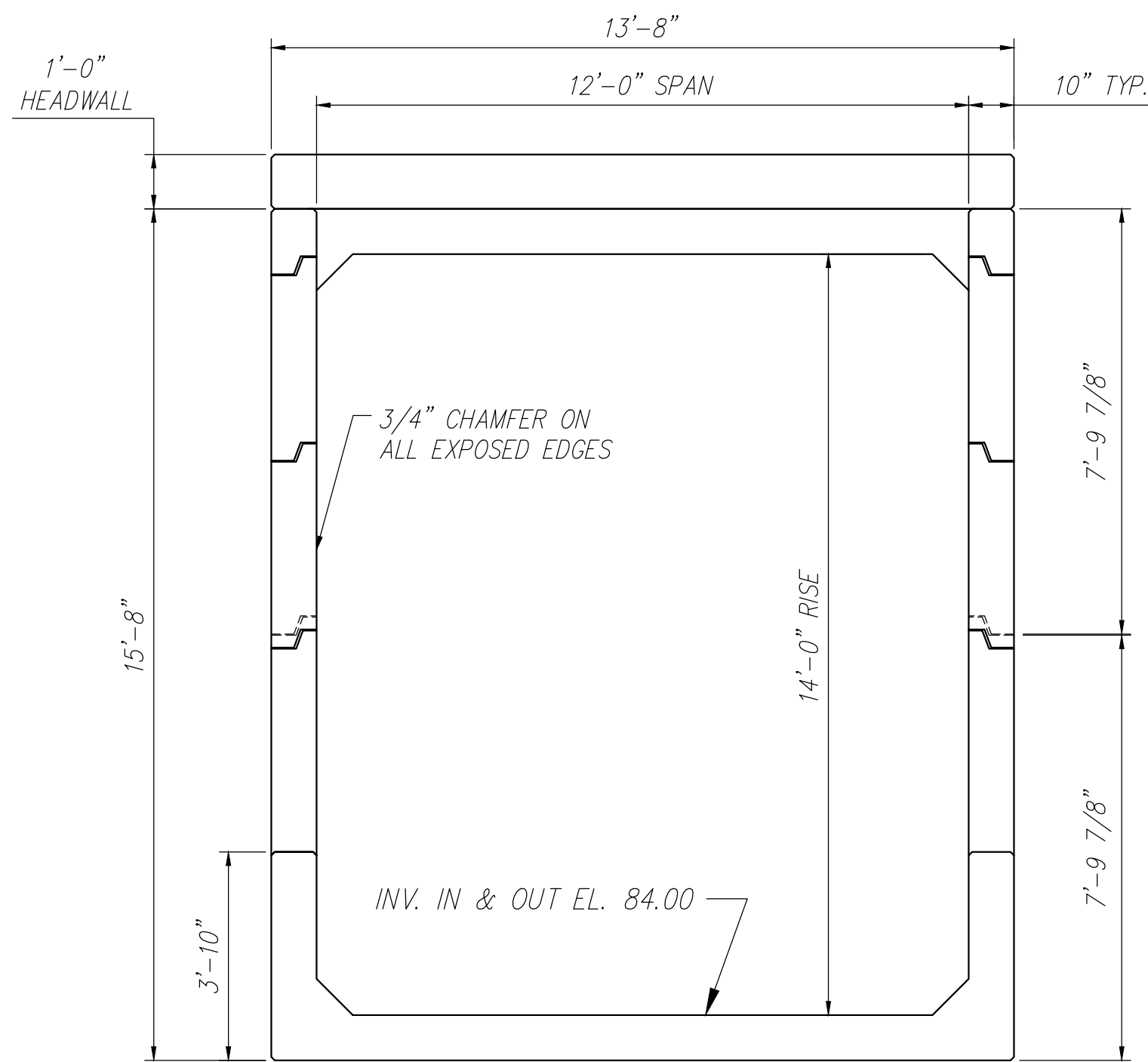
This drawing is based upon information provided from the following documents and/or sources:

Engineer: MEDOT
Project No: N/A
Drawings: SNOW SCOOTER BRIDGE
SHEET 2 OF 7
Specifications: SPECIAL PROVISION SECTION 534
PRECAST STRUCTURAL CONCRETE
Other Sources: N/A

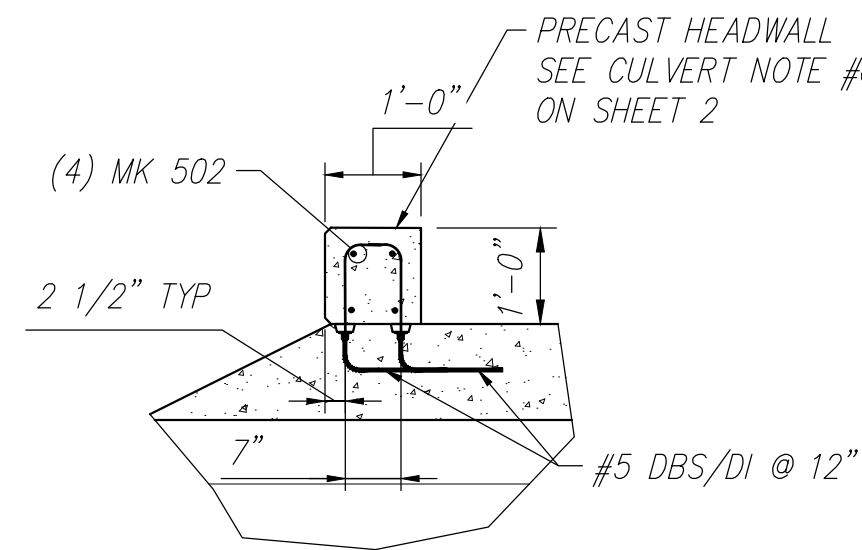
 Concrete Systems Inc. 9 Commercial St., Hudson, NH 03051 Phone 603-889-4163 Fax 603-889-2417		STATE AGENCY MEDOT		STATE OF MAINE SNOW SCOOTER BRIDGE BREWER - EDDINGTON, ME	
		Drawn By YAA Reviewed By MRS Approved By	Date 05/11/2021 05/20/2021 Date	D Drawing No. C24548-L01	REV 1
Quantity: —		Project No: WIN 018915.50		SHEET 2 OF 14	



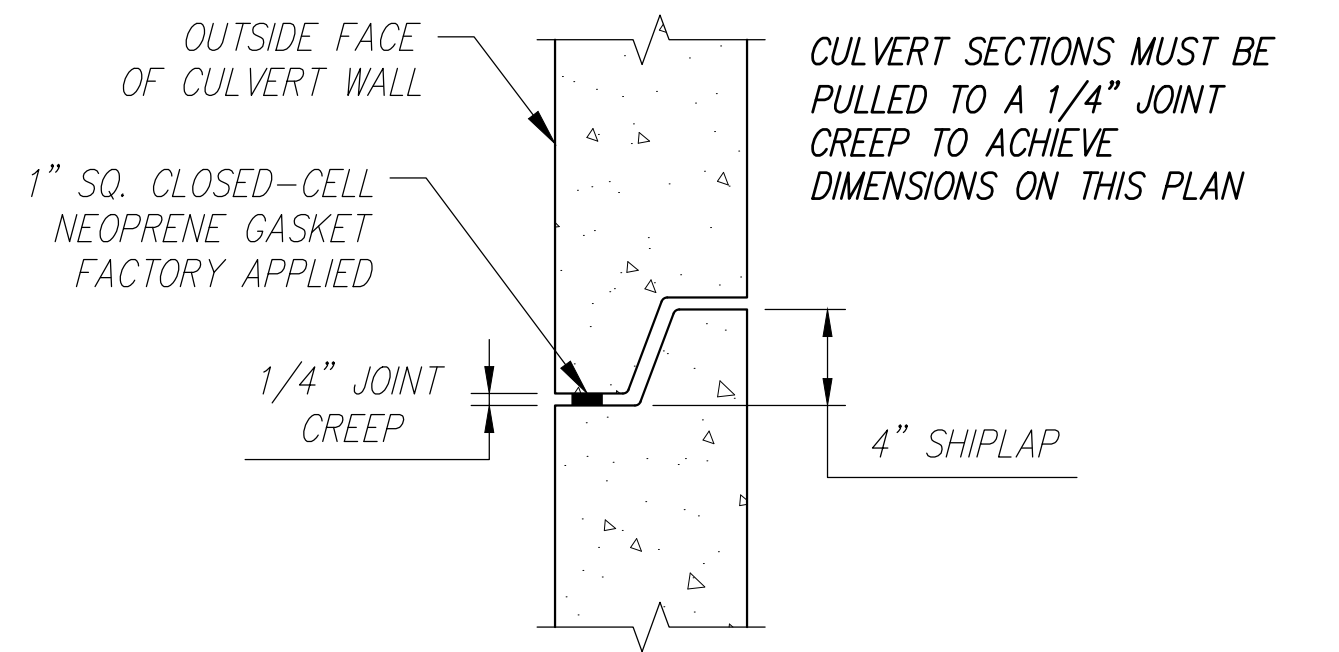
TYPICAL REINFORCING DETAIL
Scale: 3/8" = 1'-0"



TYPICAL END ELEVATIONS
SCALE: 3/8" = 1'-0"



TYPICAL END SECTION
Scale: 1/2" = 1'-0"



SHI LAP JOINT DETAIL
SCALE: N.T.S.

Contractor is to verify that all information shown on drawings has been thoroughly checked, complies with the contract documents and is adequate to meet the field conditions. Some dimensions and details may differ slightly from contract drawings to accommodate the manufacturing or design process. Approval of this drawing indicates that any deviation from the contract documents has been reviewed and found to be acceptable. Production will not commence until receipt of signed, approved shop drawings.

This drawing contains information proprietary to CONCRETE SYSTEMS, INC. This drawing is disclosed with the understanding that it will be retained in confidence and its use limited solely to the purpose for which it is disclosed. It is understood that no reproduction of this drawing is authorized without permission from CONCRETE SYSTEMS, INC. and that it will be returned to CONCRETE SYSTEMS, INC. upon request.

10				
9				
8				
7				
6				
5				
4				
3				
2				
1	09/13/2021	REMOVE TOE WALL DETAILS & ADD ADD'L REINFORCING AT HAUNCHES	YAA	
Rev.	Date	DESCRIPTION	By	
REVISIONS				

STATE OF MAINE	
DEPARTMENT OF TRANSPORTATION	
<input checked="" type="checkbox"/> REVIEWED	<input type="checkbox"/> REVIEWED WITH COMMENTS
<input type="checkbox"/> REJECTED	<input type="checkbox"/> REVISE AND RESUBMIT
Sep 22, 2021	
THIS DOCUMENT WAS REVIEWED IN ACCORDANCE WITH STATE OF MAINE SPECIFICATION SECTION 105.7 WORKING DRAWINGS	
	TRANSPORTATION ENGINEER II
NAME	TITLE

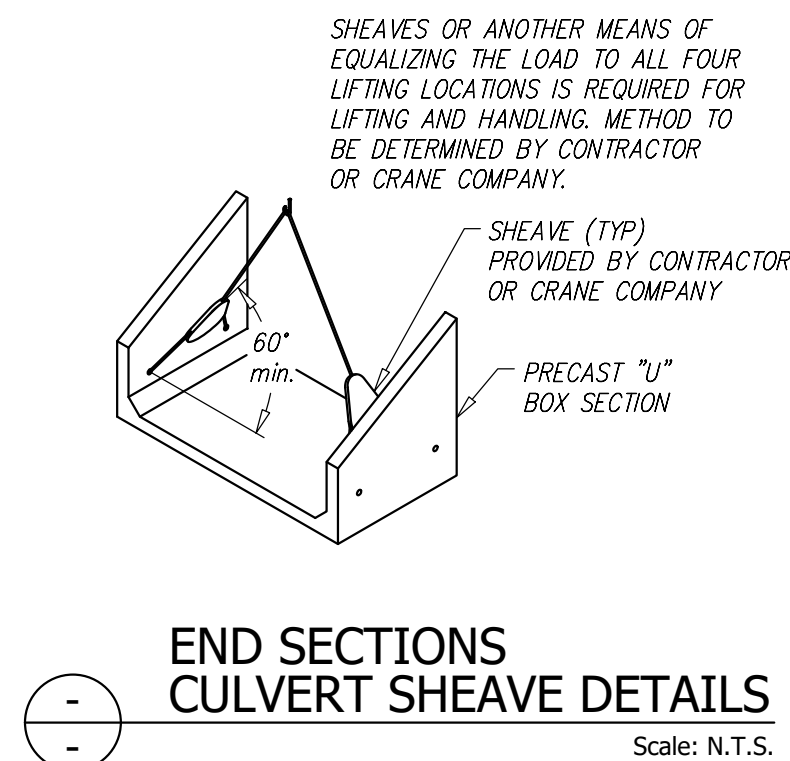
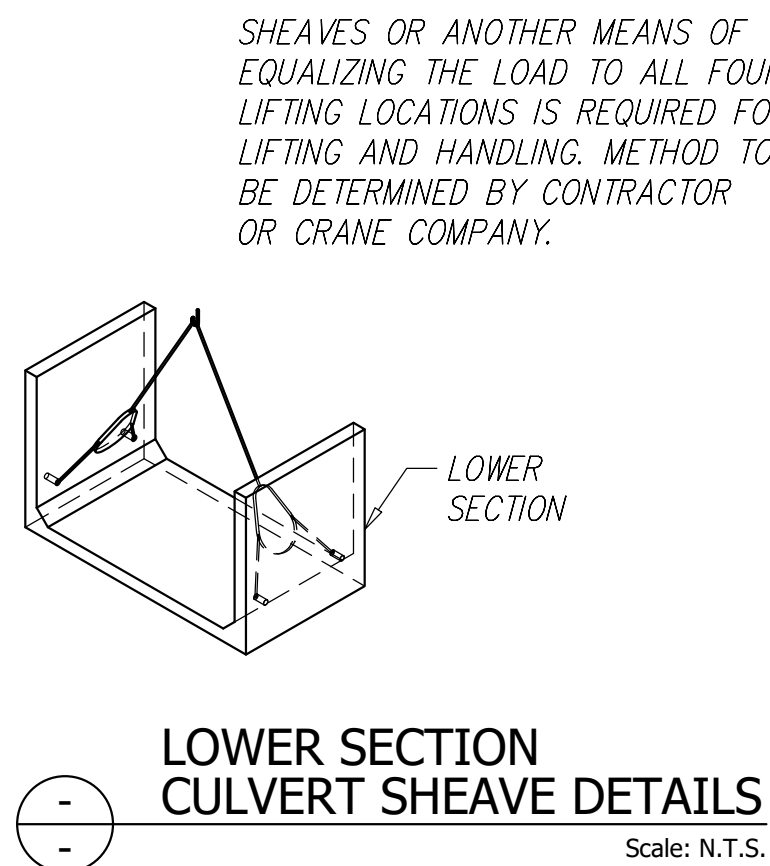
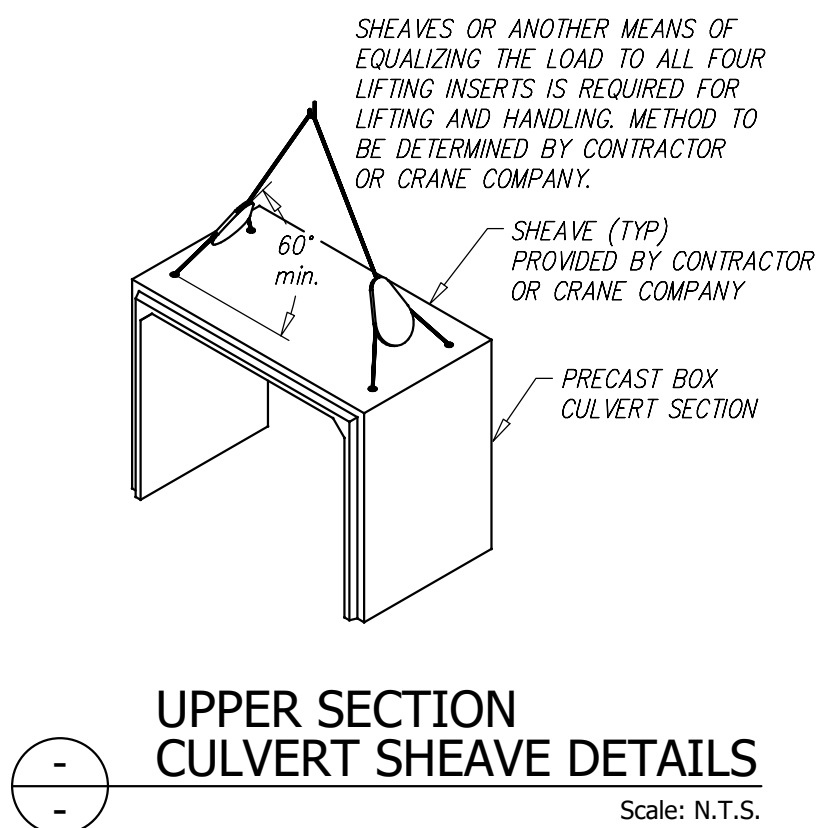
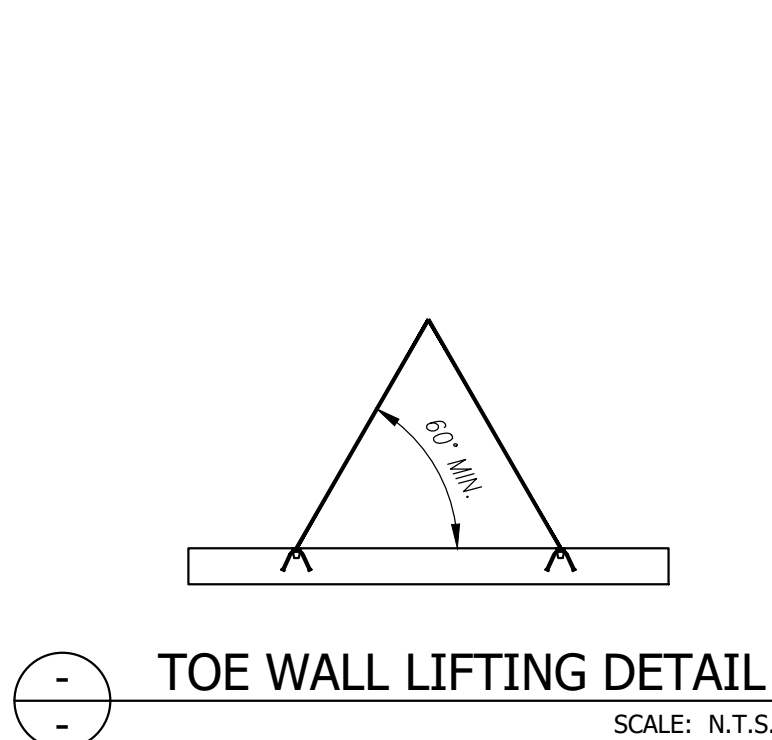
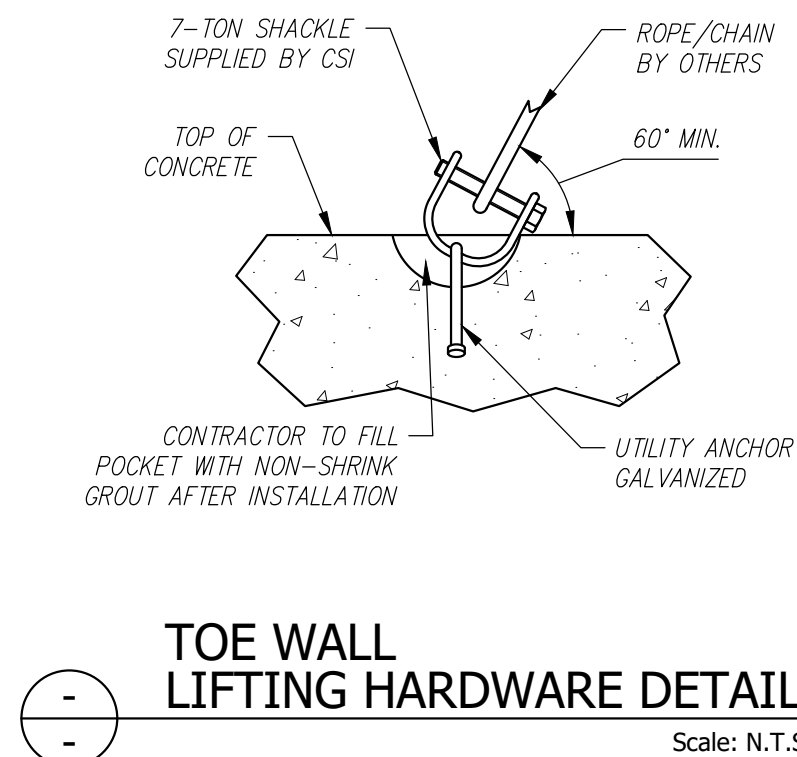
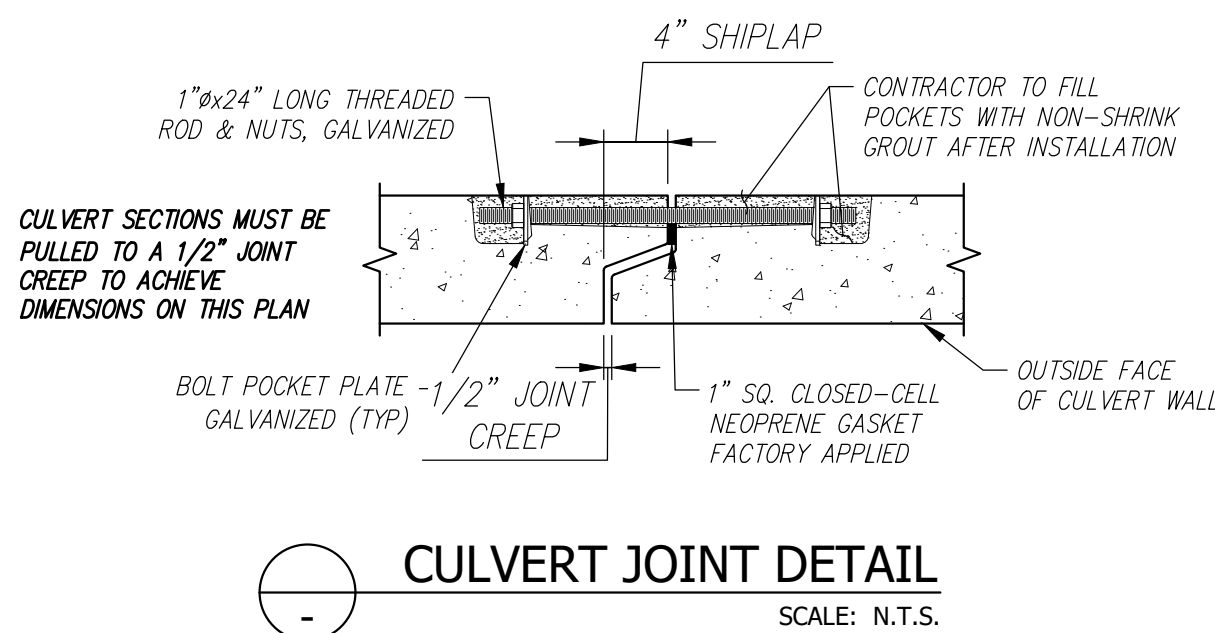
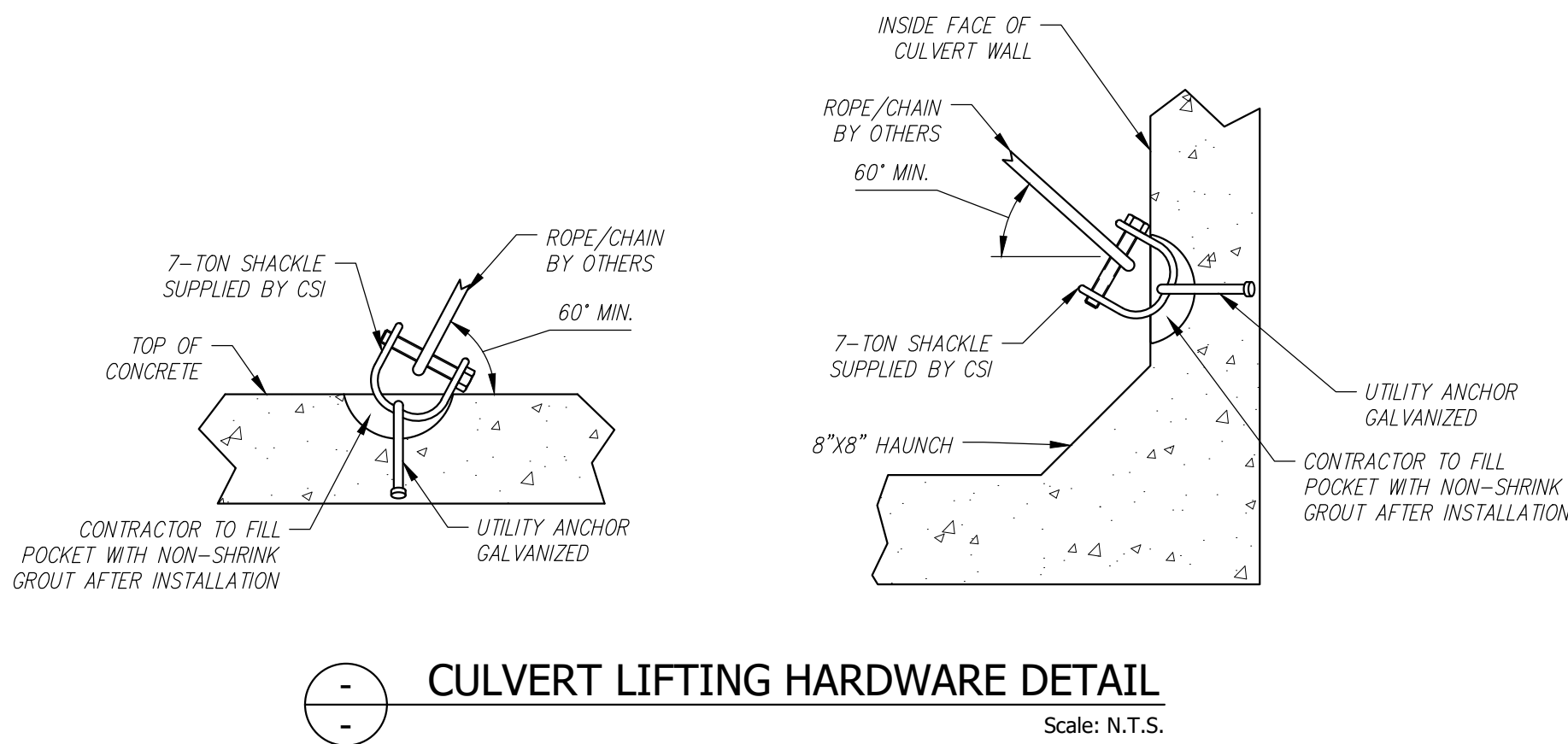
This drawing is based upon information provided from the following documents and/or sources:

Engineer: MEDOT
Project No: N/A
Drawings: SNOW SCOOTER BRIDGE
SHEET 2 OF 7
Specifications: SPECIAL PROVISION SECTION 534
PRECAST STRUCTURAL CONCRETE
Other Sources: N/A

CSI
Concrete Systems Inc.
9 Commercial St., Hudson, NH 03051
Phone 603-889-4163
Fax 603-889-2417

STATE AGENCY	
MEDOT	
Drawn By	Date
YAA	05/11/2021
Reviewed By	Date
MRS	05/20/2021
Approved By	Date

FEDERAL AID PROJECT NO. 1891500			
STATE OF MAINE SNOW SCOOTER BRIDGE BREWSTER - EDDINGTON, ME			
D		CULVERT END ELEVATION & TYPICAL END SECTION	
Drawing No.		C24548-ELE1	
Quantity: —		Project No: WIN 018915.50	
SHEET 3		OF 14	



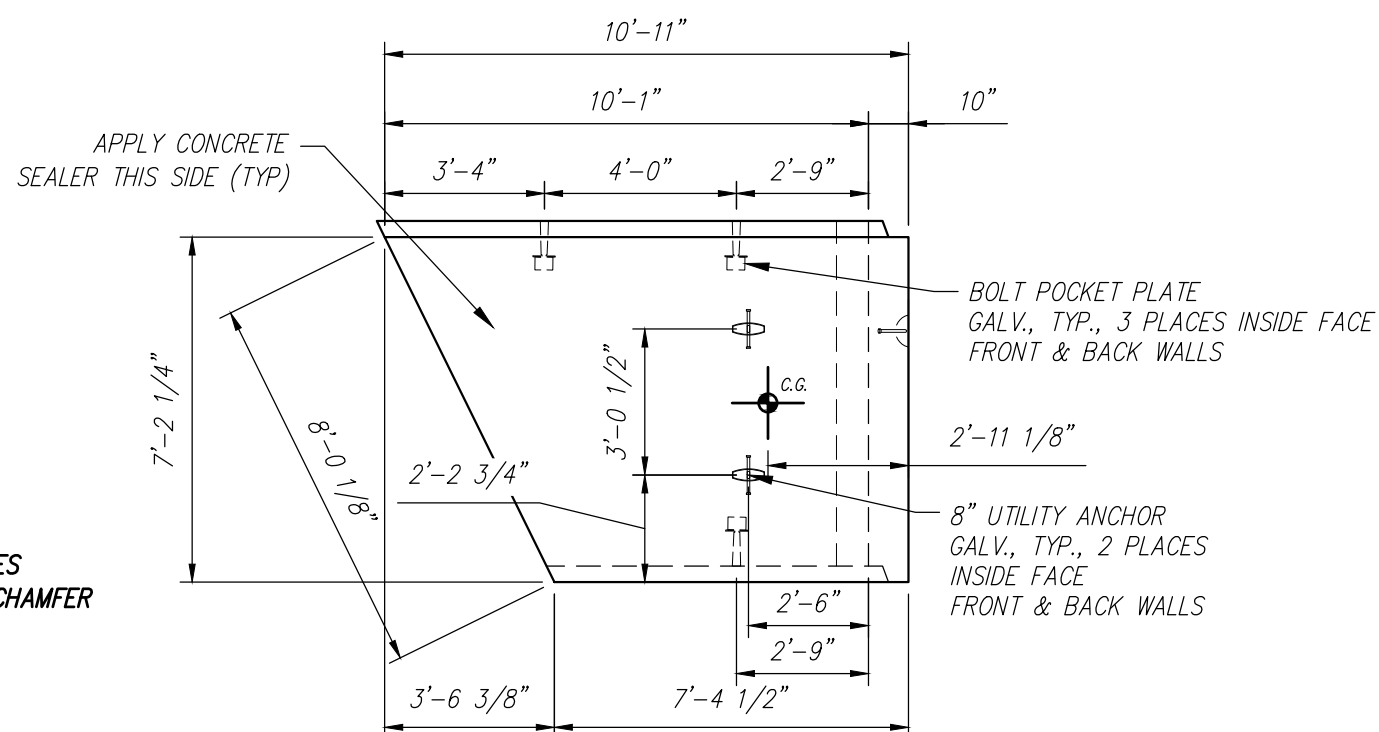
STATE OF MAINE DEPARTMENT OF TRANSPORTATION	
<input checked="" type="checkbox"/> REVIEWED	<input type="checkbox"/> REVIEWED WITH COMMENTS
<input type="checkbox"/> REJECTED	<input type="checkbox"/> REVISE AND RESUBMIT
Sep 22, 2021	
THIS DOCUMENT WAS REVIEWED IN ACCORDANCE WITH STATE OF MAINE SPECIFICATION SECTION 105.7 WORKING DRAWINGS	
NAME	TITLE

Contractor is to verify that all information shown on drawings has been thoroughly checked, complies with the contract documents and is adequate to meet the field conditions. Some dimensions and details may differ slightly from contract drawings to accommodate the manufacturing or design process. Approval of this drawing indicates that any deviation from the contract documents has been reviewed and found to be acceptable. Production will not commence until receipt of signed, approved shop drawings.	10																																																																																																																																																																																																																																																																																																																																																																																																																																																																																																																																																																																																																																																																																																																																																																																																																																																																																																																																																																																																																																																																																																																																																																																																																																																																																																																																																																																																																														
---	----	--	--	--	--	--	--	--	--	--	--	--	--	--	--	--	--	--	--	--	--	--	--	--	--	--	--	--	--	--	--	--	--	--	--	--	--	--	--	--	--	--	--	--	--	--	--	--	--	--	--	--	--	--	--	--	--	--	--	--	--	--	--	--	--	--	--	--	--	--	--	--	--	--	--	--	--	--	--	--	--	--	--	--	--	--	--	--	--	--	--	--	--	--	--	--	--	--	--	--	--	--	--	--	--	--	--	--	--	--	--	--	--	--	--	--	--	--	--	--	--	--	--	--	--	--	--	--	--	--	--	--	--	--	--	--	--	--	--	--	--	--	--	--	--	--	--	--	--	--	--	--	--	--	--	--	--	--	--	--	--	--	--	--	--	--	--	--	--	--	--	--	--	--	--	--	--	--	--	--	--	--	--	--	--	--	--	--	--	--	--	--	--	--	--	--	--	--	--	--	--	--	--	--	--	--	--	--	--	--	--	--	--	--	--	--	--	--	--	--	--	--	--	--	--	--	--	--	--	--	--	--	--	--	--	--	--	--	--	--	--	--	--	--	--	--	--	--	--	--	--	--	--	--	--	--	--	--	--	--	--	--	--	--	--	--	--	--	--	--	--	--	--	--	--	--	--	--	--	--	--	--	--	--	--	--	--	--	--	--	--	--	--	--	--	--	--	--	--	--	--	--	--	--	--	--	--	--	--	--	--	--	--	--	--	--	--	--	--	--	--	--	--	--	--	--	--	--	--	--	--	--	--	--	--	--	--	--	--	--	--	--	--	--	--	--	--	--	--	--	--	--	--	--	--	--	--	--	--	--	--	--	--	--	--	--	--	--	--	--	--	--	--	--	--	--	--	--	--	--	--	--	--	--	--	--	--	--	--	--	--	--	--	--	--	--	--	--	--	--	--	--	--	--	--	--	--	--	--	--	--	--	--	--	--	--	--	--	--	--	--	--	--	--	--	--	--	--	--	--	--	--	--	--	--	--	--	--	--	--	--	--	--	--	--	--	--	--	--	--	--	--	--	--	--	--	--	--	--	--	--	--	--	--	--	--	--	--	--	--	--	--	--	--	--	--	--	--	--	--	--	--	--	--	--	--	--	--	--	--	--	--	--	--	--	--	--	--	--	--	--	--	--	--	--	--	--	--	--	--	--	--	--	--	--	--	--	--	--	--	--	--	--	--	--	--	--	--	--	--	--	--	--	--	--	--	--	--	--	--	--	--	--	--	--	--	--	--	--	--	--	--	--	--	--	--	--	--	--	--	--	--	--	--	--	--	--	--	--	--	--	--	--	--	--	--	--	--	--	--	--	--	--	--	--	--	--	--	--	--	--	--	--	--	--	--	--	--	--	--	--	--	--	--	--	--	--	--	--	--	--	--	--	--	--	--	--	--	--	--	--	--	--	--	--	--	--	--	--	--	--	--	--	--	--	--	--	--	--	--	--	--	--	--	--	--	--	--	--	--	--	--	--	--	--	--	--	--	--	--	--	--	--	--	--	--	--	--	--	--	--	--	--	--	--	--	--	--	--	--	--	--	--	--	--	--	--	--	--	--	--	--	--	--	--	--	--	--	--	--	--	--	--	--	--	--	--	--	--	--	--	--	--	--	--	--	--	--	--	--	--	--	--	--	--	--	--	--	--	--	--	--	--	--	--	--	--	--	--	--	--	--	--	--	--	--	--	--	--	--	--	--	--	--	--	--	--	--	--	--	--	--	--	--	--	--	--	--	--	--	--	--	--	--	--	--	--	--	--	--	--	--	--	--	--	--	--	--	--	--	--	--	--	--	--	--	--	--	--	--	--	--	--	--	--	--	--	--	--	--	--	--	--	--	--	--	--	--	--	--	--	--	--	--	--	--	--	--	--	--	--	--	--	--	--	--	--	--	--	--	--	--	--	--	--	--	--	--	--	--	--	--	--	--	--	--	--	--	--	--	--	--	--	--	--	--	--	--	--	--	--	--	--	--	--	--	--	--	--	--	--	--	--	--	--	--	--	--	--	--	--	--	--	--	--	--	--	--	--	--	--	--	--	--	--	--	--	--	--	--	--	--	--	--	--	--	--	--	--	--	--	--	--	--	--	--	--	--	--	--	--	--	--	--	--	--	--	--	--	--	--	--	--	--	--	--	--	--	--	--	--	--	--	--	--	--	--	--	--	--	--	--	--	--	--	--	--	--	--	--	--	--	--	--	--	--	--	--	--	--	--	--	--	--	--	--	--	--	--	--	--	--	--	--	--	--	--	--	--	--	--	--	--	--	--	--	--	--	--	--	--	--	--	--	--	--	--	--	--	--	--	--	--	--	--	--	--	--	--	--	--	--	--	--	--	--	--	--	--	--	--	--	--	--	--	--	--	--	--	--	--	--	--	--	--	--	--	--	--	--	--	--	--	--	--	--	--	--	--	--	--	--	--	--	--	--	--	--	--	--	--	--	--	--	--	--	--	--	--	--	--	--	--	--	--	--	--	--	--	--	--	--	--	--	--	--	--	--	--	--	--	--	--	--	--	--	--	--	--	--	--	--	--	--	--	--	--	--	--	--	--	--	--	--	--	--	--	--	--	--	--	--	--	--	--	--	--	--	--	--	--	--	--	--	--	--	--	--	--	--	--	--	--	--	--	--	--	--	--	--	--	--	--	--	--	--	--	--	--	--	--	--	--	--	--	--	--	--	--	--	--	--	--	--	--	--	--	--	--	--	--	--	--	--	--	--	--	--	--	--	--	--	--	--	--	--	--	--	--	--	--	--	--	--	--	--	--	--	--	--	--	--	--	--	--	--	--	--	--	--	--	--	--	--	--	--	--	--	--	--	--	--	--	--	--	--	--	--	--	--	--	--	--	--	--	--	--	--	--	--	--	--	--	--	--	--	--	--	--	--	--	--	--	--	--	--	--	--	--	--	--	--	--	--	--	--	--	--	--	--	--	--	--	--	--	--	--	--	--	--	--	--	--	--	--	--	--	--	--	--	--	--	--	--	--	--	--	--	--	--	--	--	--	--	--	--	--	--	--	--	--	--	--	--	--	--	--	--	--	--	--	--	--	--	--	--	--	--	--	--	--	--	--	--	--	--	--	--	--	--	--	--	--	--	--

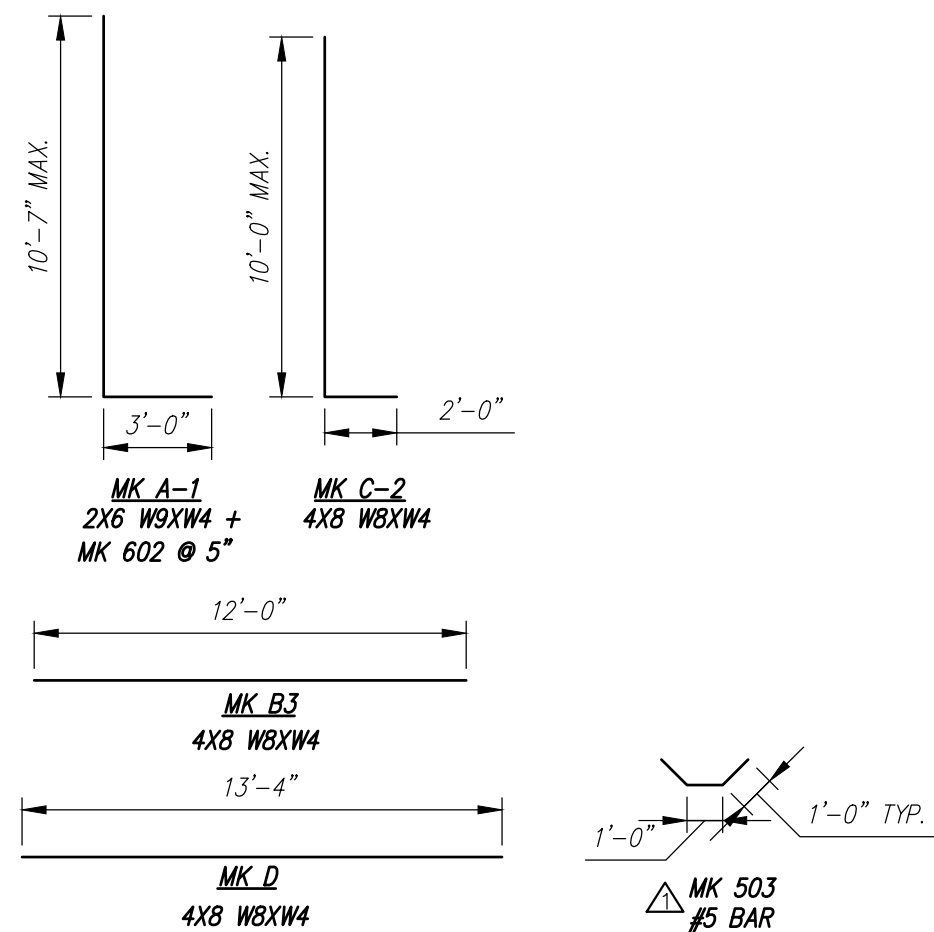
Rebar Schedule				
MK		QTY	LENGTH	
503	#5	14	3' - 0"	
601	#6	34	10' - 4"	MAX.

[illegible]

Rebar Schedule				
MK		QTY	LENGTH	
503	#5	14	3' - 0"	
602	#6	34	13' - 7"	MAX.



 **SIDE VIEW**
Scale: $1/4" = 1'-0"$

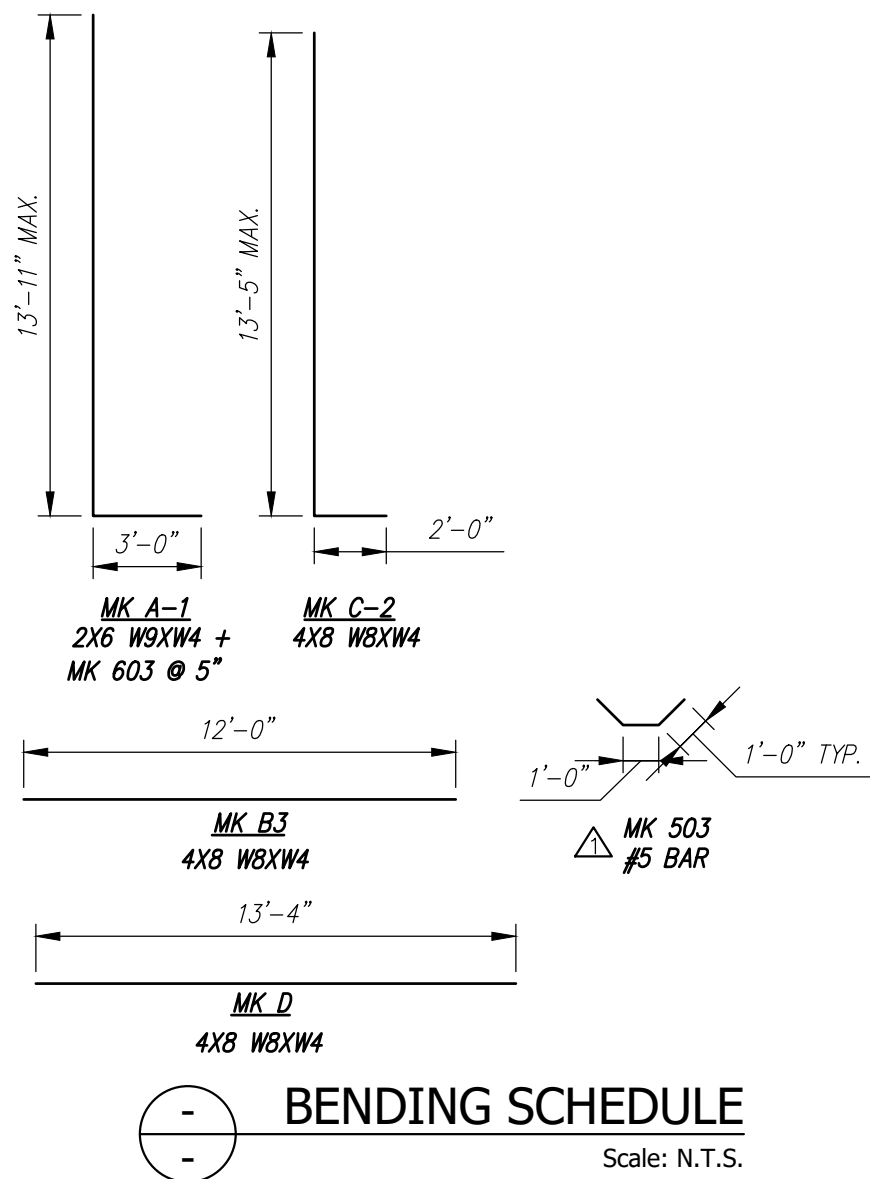
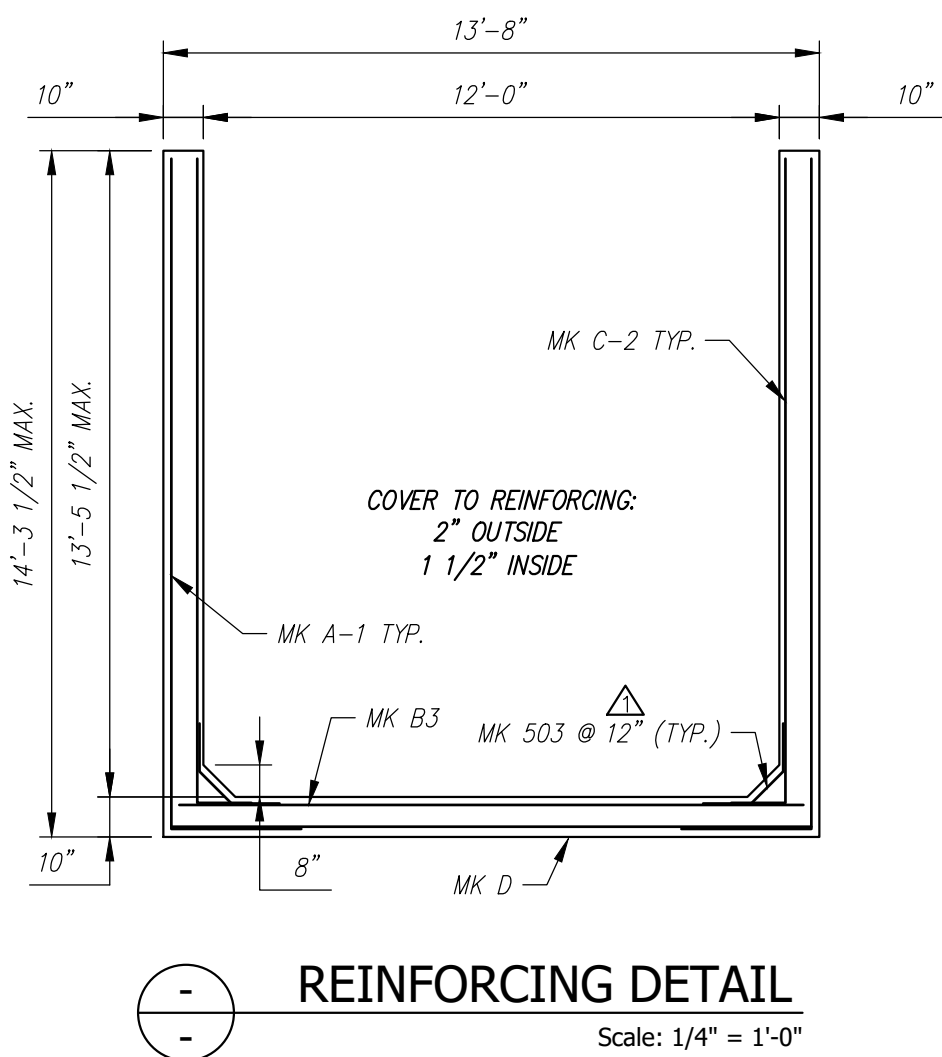
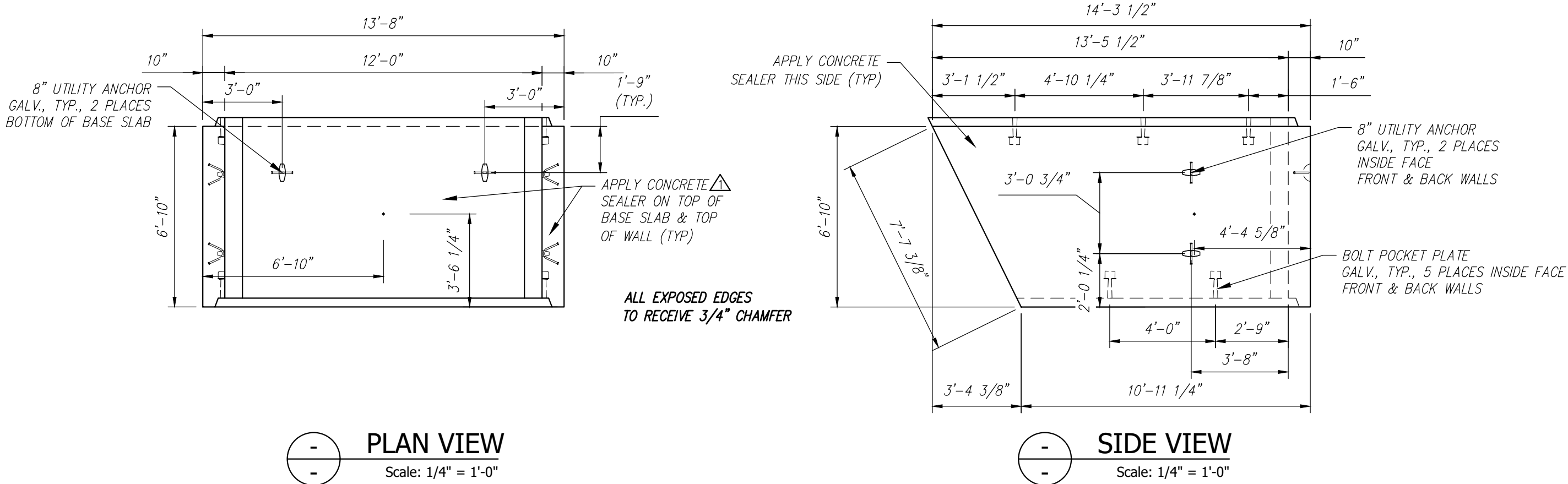


 **BENDING SCHEDULE** Scale: N.T.S.


[illegible]

A3 - BILL OF MATERIALS / EMBEDS				
CSI ID#	DESCRIPTION	QTY	UM	COMMENTS
DTJ	CERTI-VEX PENSEAL 244-100%	2	GA	
EM-00125	BOLT POCKET PLATES (GALVANIZED)	10	EA	
EM-00115	8" UTILITY ANCHOR - GALVANIZED	6	EA	
JS-00002	1"X1"CLOSED NEOP GASKET	35.5	FT	AROUND BELL
RM-00015	REBAR #5 BLACK-GR 60 40'	44	LB	
RM-00017	REBAR #6 BLACK-GR 60 40'	813	LB	
RM-00098	WIRE MESH ALL SIZES	944	LB	TOTAL WEIGHT
MX-FA5000SC30	MIX DESIGN - FLY ASH 5000 SELF COMPACTIN	7.96	CY	

Rebar Schedule		
MK	QTY	LENGTH
503 #5	14	3' 0" MAX.
603 #6	32	16' 11" MAX.

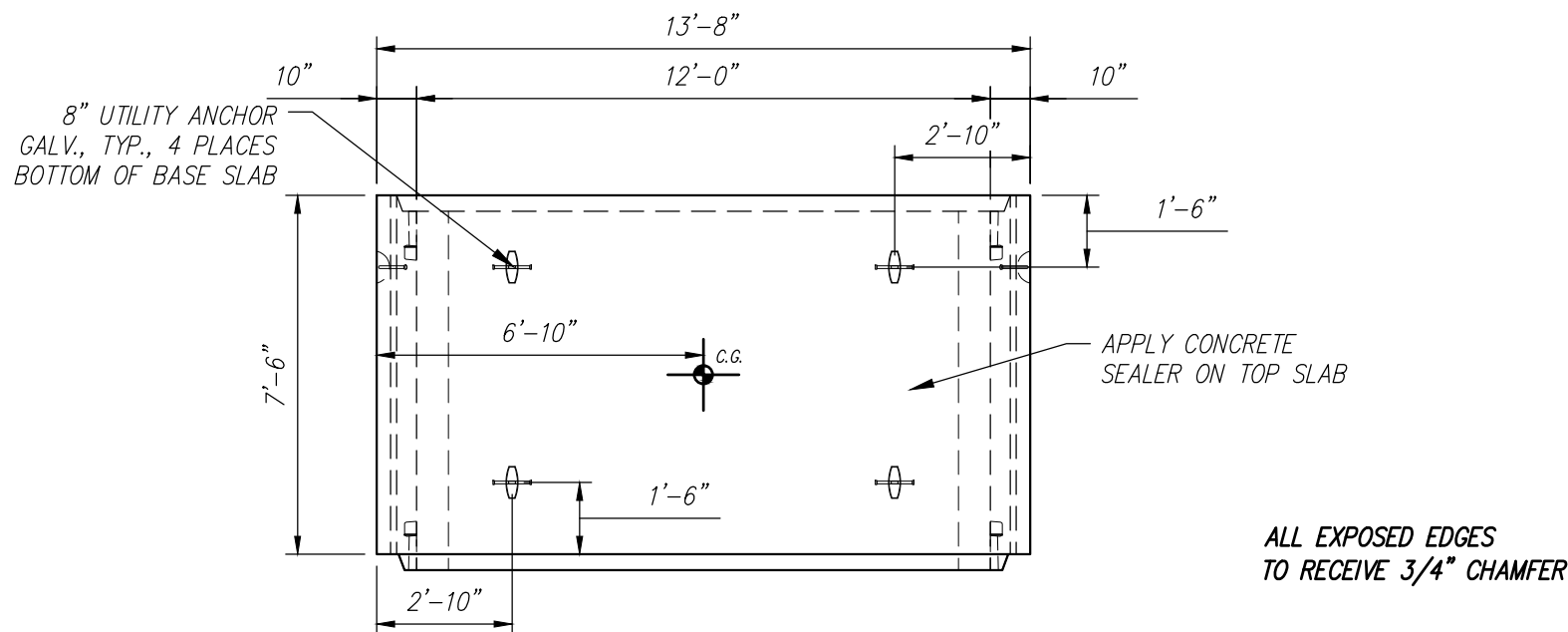


STATE OF MAINE DEPARTMENT OF TRANSPORTATION	
<input checked="" type="checkbox"/> REVIEWED	<input type="checkbox"/> REVIEWED WITH COMMENTS
<input type="checkbox"/> REJECTED	<input type="checkbox"/> REVISE AND RESUBMIT
Sep 22, 2021	
THIS DOCUMENT WAS REVIEWED IN ACCORDANCE WITH STATE OF MAINE SPECIFICATION SECTION 106.7 WORKING DRAWINGS	
	Transportation Engineer II
NAME	TITLE

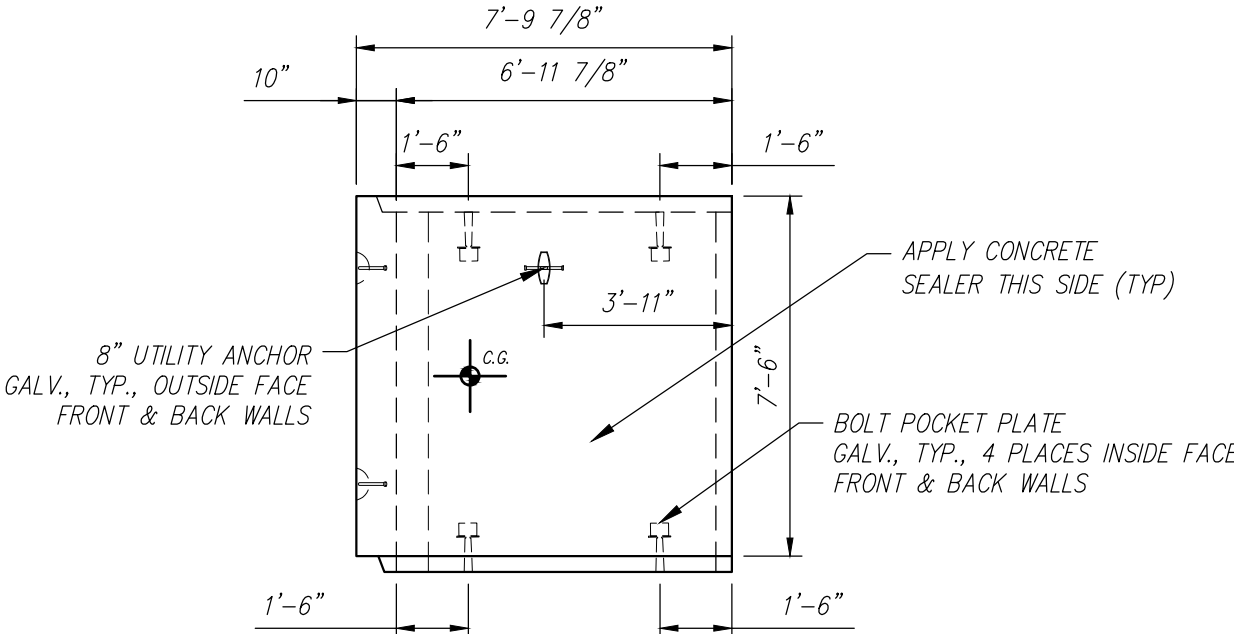
Contractor is to verify that all information shown on drawings has been thoroughly checked, complies with the contract documents and is adequate to meet the field conditions. Some dimensions and details may differ slightly from contract drawings to accommodate the manufacturing or design process. Approval of this drawing indicates that any deviation from the contract documents has been reviewed and found to be acceptable. Production will not commence until receipt of signed, approved shop drawings.	10					This drawing is based upon information provided from the following documents and/or sources: Engineer: MEDOT Project No: N/A Drawings: SNOW SCOOTER BRIDGE SHEET 2 OF 7 Specifications: SPECIAL PROVISION SECTION 534 PRECAST STRUCTURAL CONCRETE Other Sources: N/A	 Concrete Systems Inc. 9 Commercial St., Hudson, NH, 03051 Phone 603-889-4163 Fax 603-889-2417	STATE AGENCY		STATE OF MAINE SNOW SCOOTER BRIDGE BREWER — EDDINGTON, ME		
	9							Drawn By YAA	Date 08/10/2021	D	Drawing No. INDIVIDUAL PIECE SHOP DRAWING A3 C24548-A3	REV 1
	8							Reviewed By MRS	Date 08/12/2021			
	7							Approved By	Date			
	6											
	5									Quantity: 1	Project No: WIN 018915.50	SHEET 7 OF 14
	4									FEDERAL AID PROJECT NO. 1891500		
	3									STATE OF MAINE SNOW SCOOTER BRIDGE BREWER — EDDINGTON, ME		
	2									INDIVIDUAL PIECE SHOP DRAWING A3 C24548-A3		
	1	09/13/2021	REVISED REINFORCING	YAA						SHEET 7 OF 14		
Rev.	Date	DESCRIPTION	By				SHEET 7 OF 14					
		REVISIONS										

A5 - BILL OF MATERIALS / EMBEDS				
CSI ID#	DESCRIPTION	QTY	UM	COMMENTS
DTJ	CERTI-VEX PENSEAL 244-100%	1.7	GA	
EM-00125	BOLT POCKET PLATES (GALVANIZED)	8	EA	
EM-00115	8" UTILITY ANCHOR - GALVANIZED	6	EA	
JS-00002	1"X1" CLOSED NEOP GASKET	27.83	FT	AROUND BELL
RM-00013	REBAR #4 BLACK- GR 60	64	LB	
RM-00015	REBAR #5 BLACK-GR 60 40'	379	LB	
RM-00098	WIRE MESH ALL SIZES	740	LB	TOTAL WEIGHT
MX-FA5000SC30	MIX DESIGN - FLY ASH 5000 SELF COMPACTIN	6.65	CY	

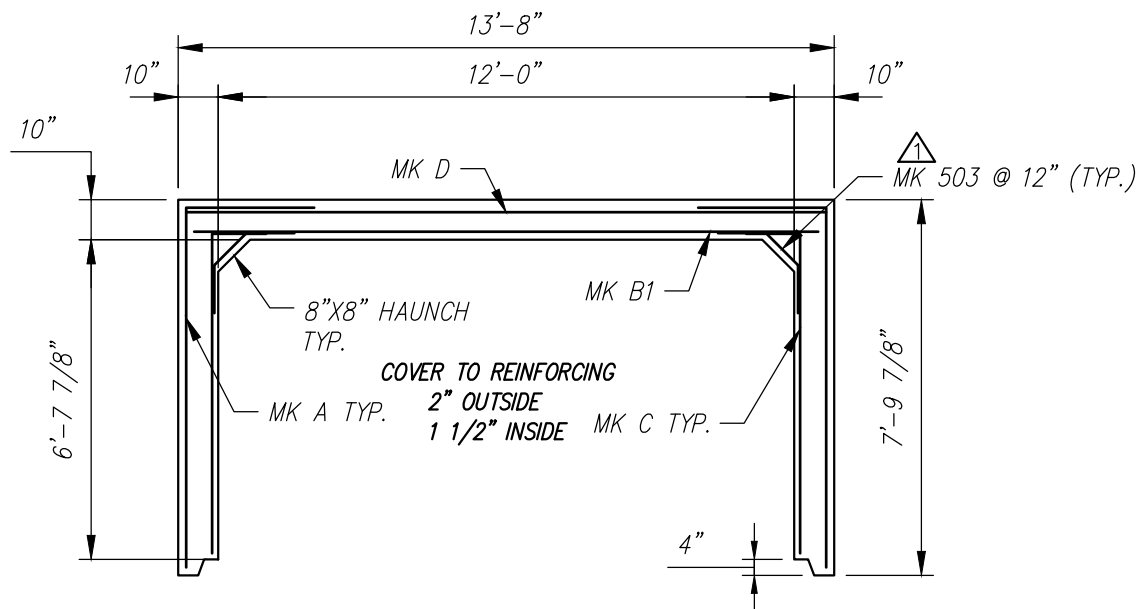
Rebar Schedule		
MK	QTY	LENGTH
401 #4	8	12'-0"
501 #5	30	10'-6"
503 #5	16	3'-0"



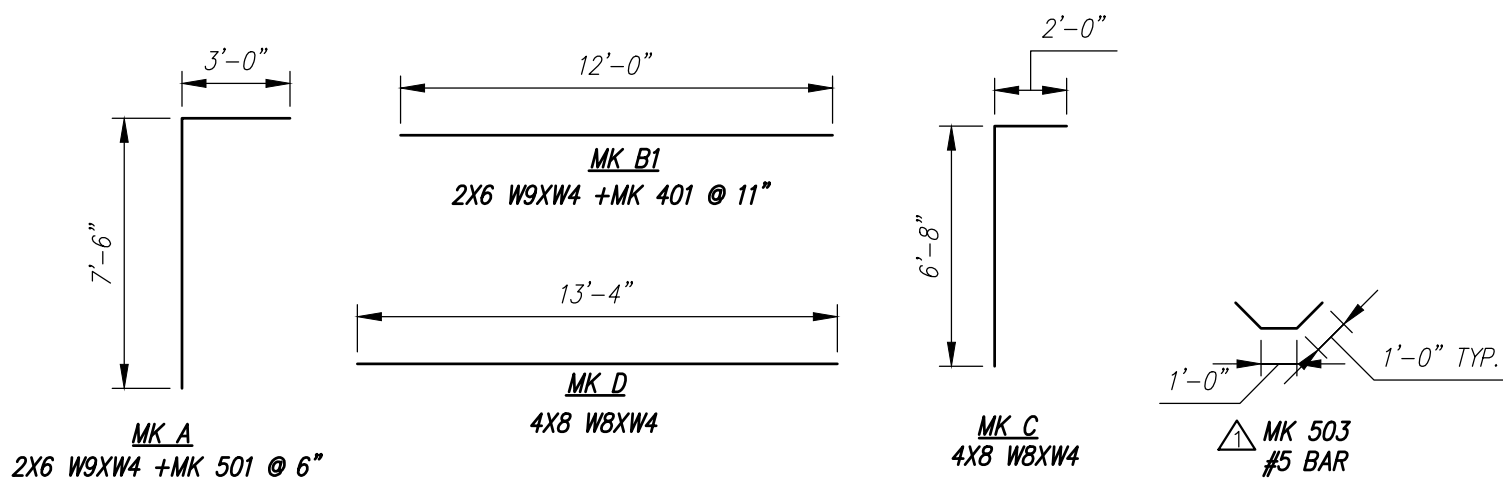
PLAN VIEW
Scale: 1/4" = 1'-0"



SIDE VIEW
Scale: 1/4" = 1'-0"



TYPICAL REINFORCING DETAIL
Scale: 1/4" = 1'-0"

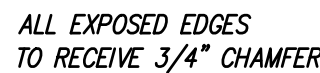



BENDING SCHEDULE
Scale: N.T.S.

STATE OF MAINE DEPARTMENT OF TRANSPORTATION	
<input checked="" type="checkbox"/> REVIEWED	<input type="checkbox"/> REVIEWED WITH COMMENTS
<input type="checkbox"/> REJECTED	<input type="checkbox"/> REVISE AND RESUBMIT
Sep 22, 2021	
THIS DOCUMENT WAS REVIEWED IN ACCORDANCE WITH STATE OF MAINE SPECIFICATION SECTION 195.2 WORKING DRAWINGS	
	Transportation Engineer II
NAME	TITLE

Contractor is to verify that all information shown on drawings has been thoroughly checked, complies with the contract documents and is adequate to meet the field conditions. Some dimensions and details may differ slightly from contract drawings to accommodate the manufacturing or design process. Approval of this drawing indicates that any deviation from the contract documents has been reviewed and found to be acceptable. Production will not commence until receipt of signed, approved shop drawings.		10			
		9			
This drawing contains information proprietary to CONCRETE SYSTEMS, INC. This drawing is disclosed with the understanding that it will be retained in confidence and its use limited solely to the purpose for which it is disclosed. It is understood that no reproduction of this drawing is authorized without permission from CONCRETE SYSTEMS, INC. and that it will be returned to CONCRETE SYSTEMS, INC. upon request.		8			
		7			
		6			
		5			
		4			
		3			
		2			
		1	09/12/2021	REVISED REINFORCING	YAA
Rev.	Date			DESCRIPTION	By
REVISIONS					
This drawing is based upon information provided from the following documents and/or sources:					
Engineer: MEDOT Project No: N/A Drawings: SNOW SCOOTER BRIDGE SHEET 2 OF 7 Specifications: SPECIAL PROVISION SECTION 534 Other Sources: N/A					
Concrete Systems Inc. 9 Commercial St., Hudson, NH 03051 Phone 603-889-4163 Fax 603-889-2417					
STATE AGENCY MEDOT					
STATE OF MAINE SNOW SCOOTER BRIDGE BREWER - EDDINGTON, ME					
Drawn By YAA	Date 08/10/2021	INDIVIDUAL PIECE SHOP DRAWING A5			
Reviewed By MRS	Date 08/12/2021	C24548-A5			
Approved By	Date	Quantity: 8	Project No: WIN 018915.50	SHEET 9 OF 14	

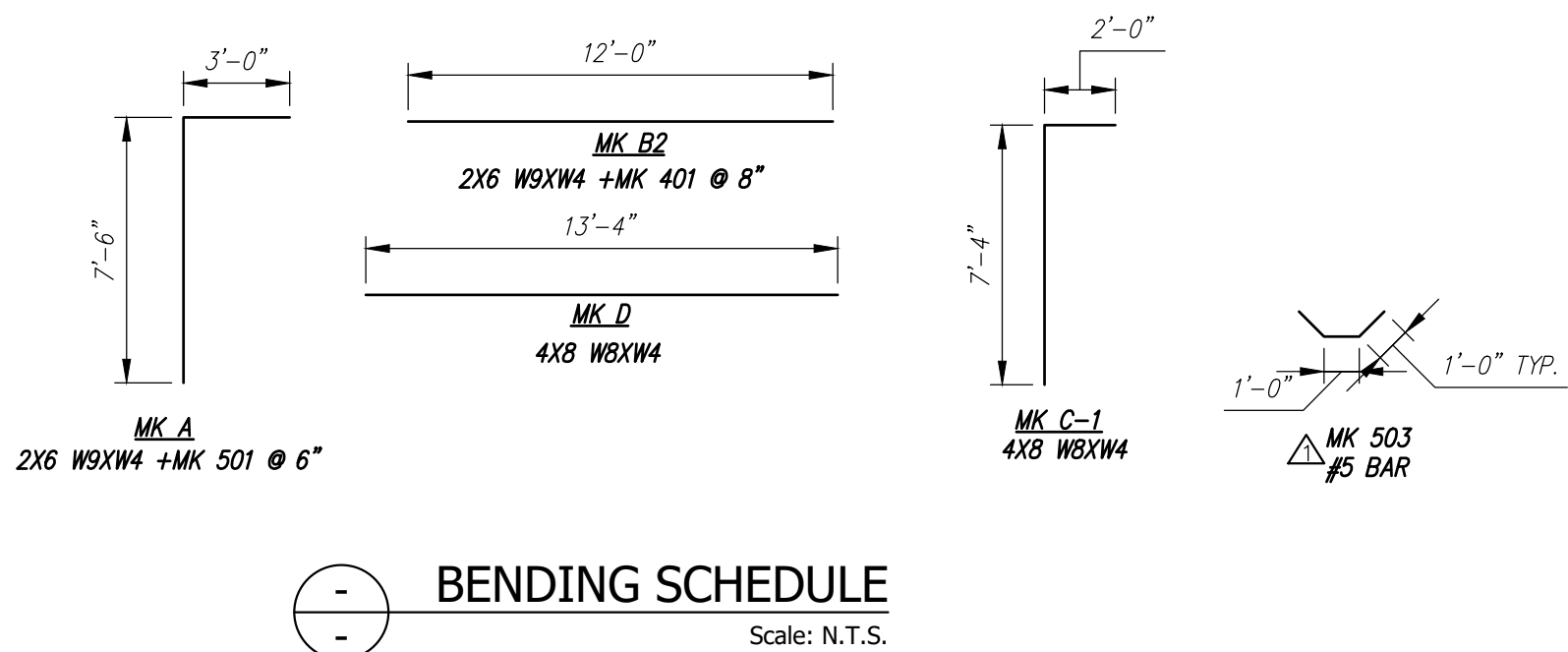
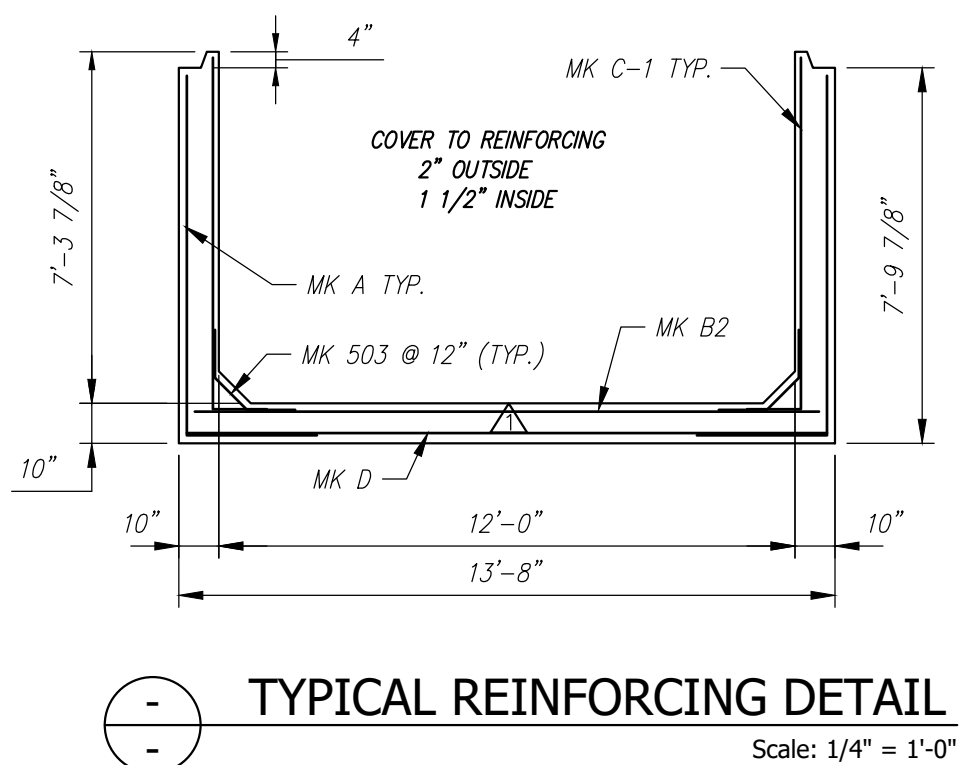
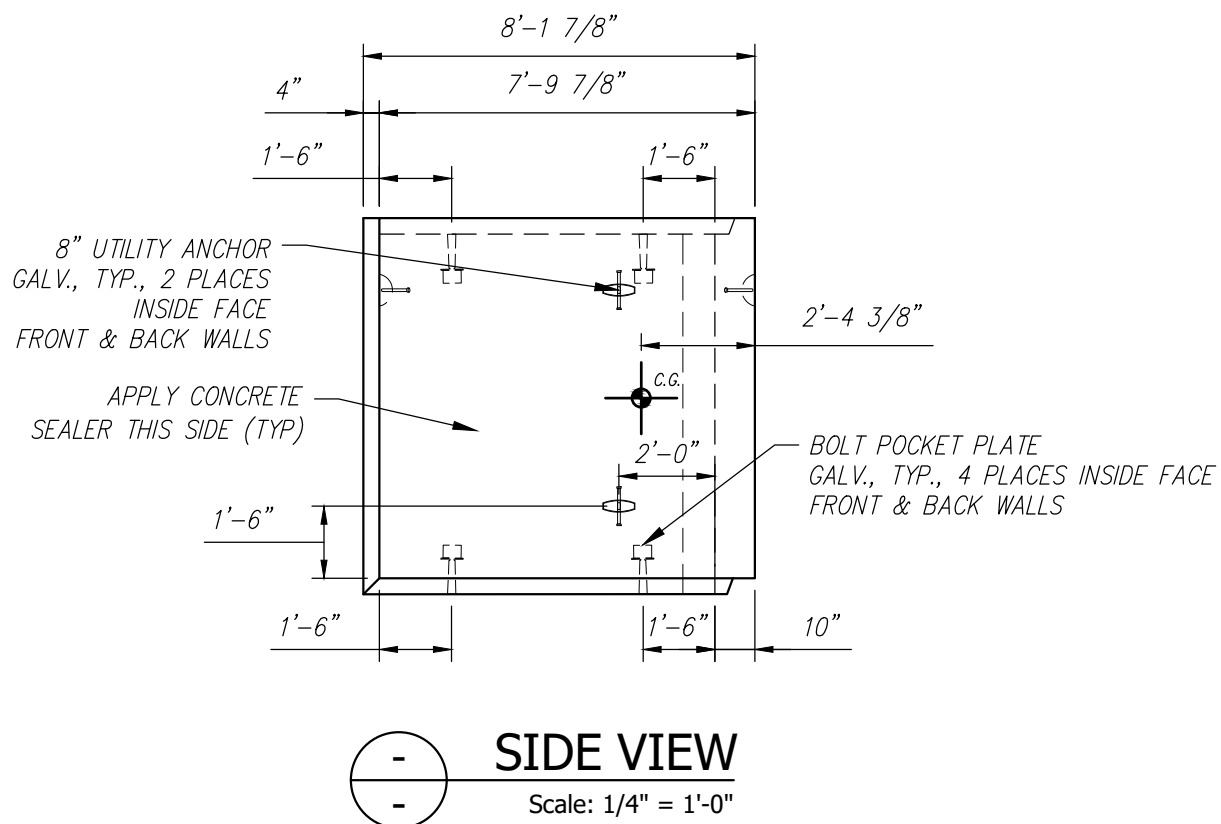
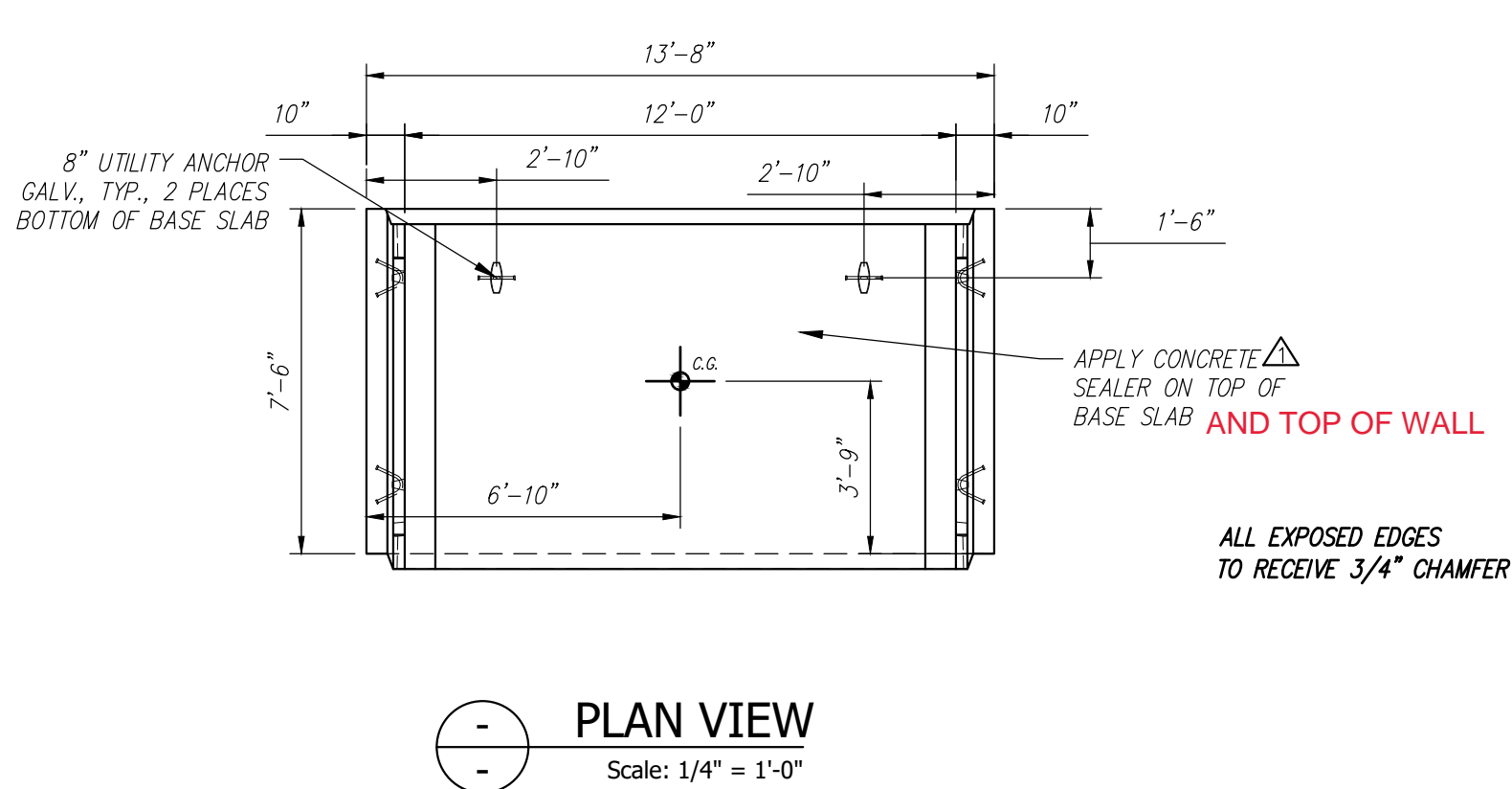
Headwall Rebar Schedule			
MK		QTY	LENGTH
502	#5	4	13' - 4"




<p>Contractor is to verify that all information shown on drawings has been thoroughly checked, complies with the contract documents and is adequate to meet the field conditions. Some dimensions and details may differ slightly from contract drawings to accommodate the manufacturing or design process. Approval of this drawing indicates that any deviation from the contract documents has been reviewed and found to be acceptable. Production will not commence until receipt of signed, approved shop drawings.</p> <p>This drawing contains information proprietary to CONCRETE SYSTEMS, INC. This drawing is disclosed with the understanding that it will be retained in confidence and its use limited solely to the purpose for which it is disclosed. It is understood that no reproduction of this drawing is authorized without permission from CONCRETE SYSTEMS, INC. and that it will be returned to CONCRETE SYSTEMS, INC. upon request.</p>	10					<p>This drawing is based upon information provided from the following documents and/or sources:</p> <p>Engineer: MEDOT Project No: N/A Drawings: SNOW SCOOTER BRIDGE SHEET 2 OF 7</p> <p>Specifications: SPECIAL PROVISION SECTION 534 PRECAST STRUCTURAL CONCRETE</p> <p>Other Sources: N/A</p>	 <p>Concrete Systems Inc. 9 Commercial St., Hudson, NH, 03051 Phone 603-889-4163 Fax 603-889-2417</p>	STATE AGENCY		STATE OF MAINE SNOW SCOOTER BRIDGE BREWER — EDDINGTON, ME		FEDERAL AID PROJECT NO. 1891500	
	9							<p>Drawn By YAA Date 08/10/2021 Reviewed By MRS Date 08/12/2021 Approved by Date</p>	D	INDIVIDUAL PIECE SHOP DRAWING A6		REV 1	
	8									Drawing No. C24548-A6			
	7									Quantity: 1	Project No: WIN 018915.50		SHEET 10 OF 14
	6												
	5												
	4												
	3												
	2												
	1	09/13/2021	REVISED REINFORCING	YAA									
Rev.	Date	DESCRIPTION	By										
		REVISIONS											

A7 - BILL OF MATERIALS / EMBEDS				
CSI ID#	DESCRIPTION	QTY	UM	COMMENTS
DTJ	CERTI-VEX PENSEAL 244-100%	1.6	GA	
EM-00125	BOLT POCKET PLATES (GALVANIZED)	8	EA	
EM-00115	8" UTILITY ANCHOR - GALVANIZED	6	EA	
JS-00002	1"X1" CLOSED NEOP GASKET	27.83	FT	AROUND BELL
RM-00013	REBAR #4 BLACK- GR 60	88	LB	
RM-00015	REBAR #5 BLACK-GR 60 40'	379	LB	
RM-00098	WIRE MESH ALL SIZES	748	LB	TOTAL WEIGHT
MX-FA5000SC30	MIX DESIGN - FLY ASH 5000 SELF COMPACTIN	6.65	CY	

Rebar Schedule		
MK	QTY	LENGTH
401 #4	11	12'-0"
501 #5	30	10'-6"
503 #5	16	3'-0"

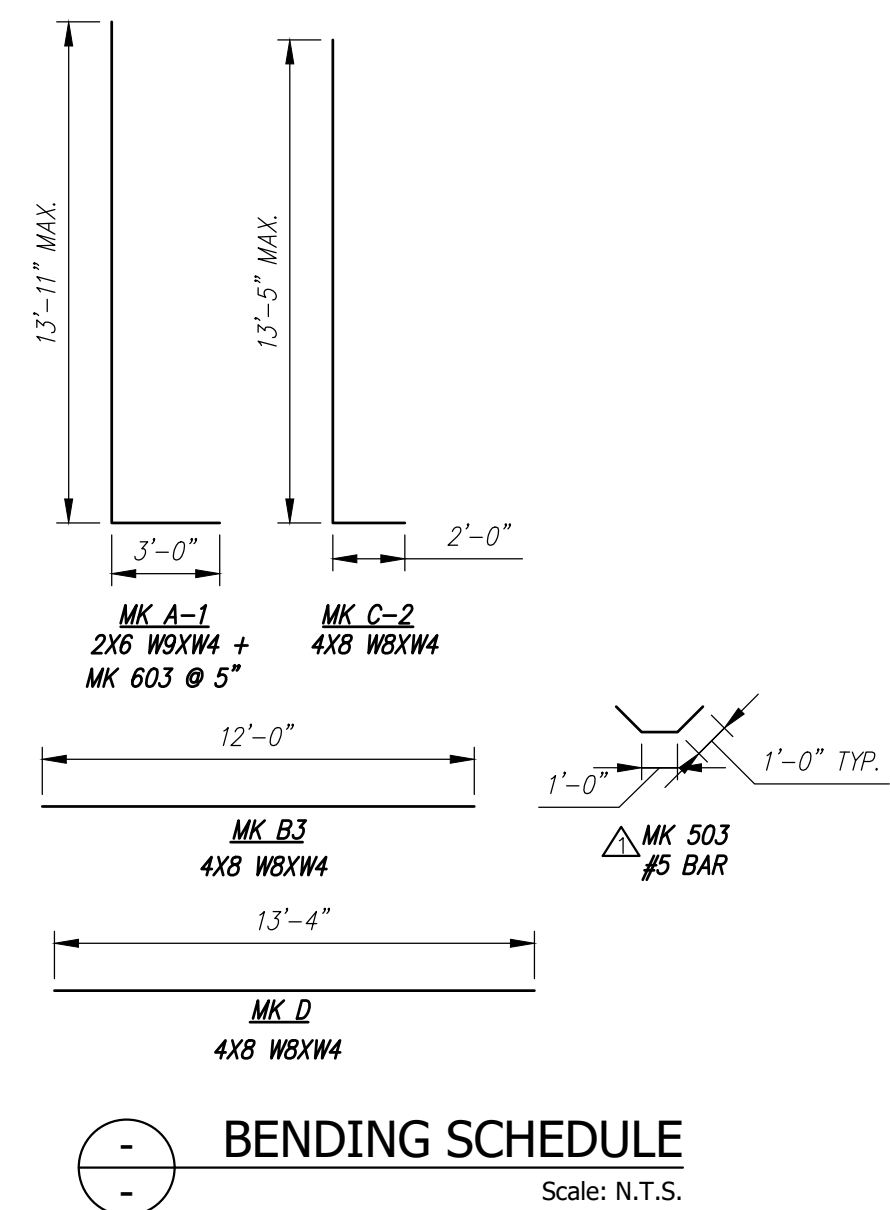
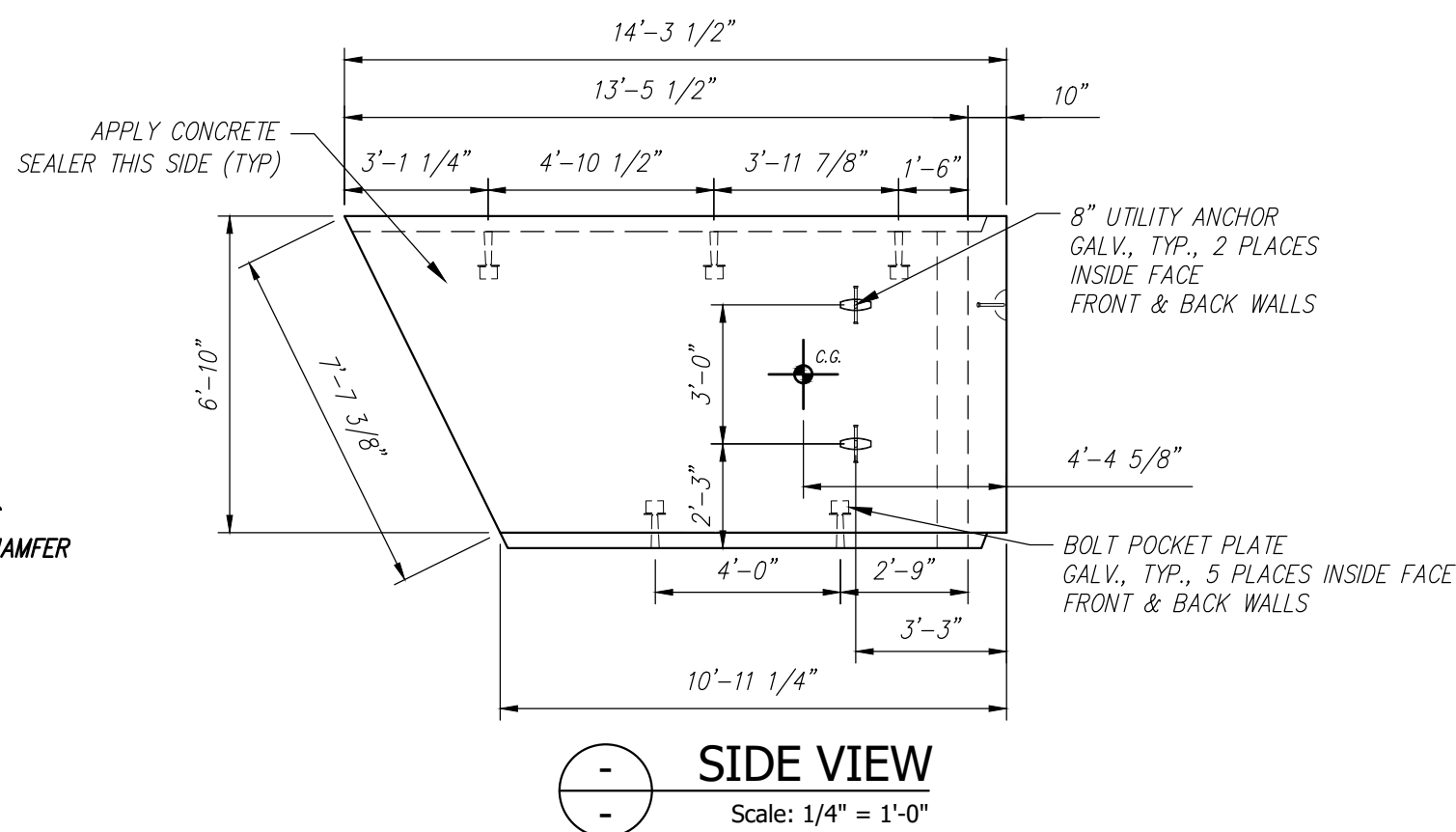


STATE OF MAINE DEPARTMENT OF TRANSPORTATION	
<input type="checkbox"/> REVIEWED	<input checked="" type="checkbox"/> REVIEWED WITH COMMENTS
<input type="checkbox"/> REJECTED	<input type="checkbox"/> REVISE AND RESUBMIT
Sep 22, 2021	
THIS DOCUMENT WAS REVIEWED IN ACCORDANCE WITH STATE OF MAINE SPECIFICATION SECTION 106.7 WORKING DRAWINGS	
	Transportation Engineer II
NAME	TITLE

Contractor is to verify that all information shown on drawings has been thoroughly checked, complies with the contract documents and is adequate to meet the field conditions. Some dimensions and details may differ slightly from contract drawings to accommodate the manufacturing or design process. Approval of this drawing indicates that any deviation from the contract documents has been reviewed and found to be acceptable. Production will not commence until receipt of signed, approved shop drawings.		10			
		9			
This drawing contains information proprietary to CONCRETE SYSTEMS, INC. This drawing is disclosed with the understanding that it will be retained in confidence and its use limited solely to the purpose for which it is disclosed. It is understood that no reproduction of this drawing is authorized without permission from CONCRETE SYSTEMS, INC. and that it will be returned to CONCRETE SYSTEMS, INC. upon request.		8			
		7			
		6			
		5			
		4			
		3			
		2			
		REVISED REINFORCING	YAA		
		Rev.	Date	DESCRIPTION	By
				REVISIONS	
This drawing is based upon information provided from the following documents and/or sources:					
Engineer: MEDOT Project No: N/A Drawings: SNOW SCOOTER BRIDGE SHEET 2 OF 7 Specifications: SPECIAL PROVISION SECTION 534 PRECAST STRUCTURAL CONCRETE Other Sources: N/A					
 Concrete Systems Inc. 9 Commercial St., Hudson, NH 03051 Phone 603-889-4163 Fax 603-889-2417					
STATE AGENCY MEDOT					
STATE OF MAINE SNOW SCOOTER BRIDGE BREWER - EDDINGTON, ME					
Drawn By YAA Reviewed By MRS Approved By		Date 08/10/2021 Date 08/12/2021 Date		D Drawing No. INDIVIDUAL PIECE SHOP DRAWING A7 C24548-A7	
Quantity: 10		Project No: WIN 018915.50		REV 1	
SHEET 11 OF 14					

FEDERAL AID PROJECT NO. 1891500

Rebar Schedule				
MK		QTY	LENGTH	
503	#5	14	3' - 0"	
603	#6	32	16' - 11"	MAX.



Contractor is to verify that all information shown on drawings has been thoroughly checked, complies with the contract documents and is adequate to meet the field conditions. Some dimensions and details may differ slightly from contract drawings to accommodate the manufacturing or design process. Approval of this drawing indicates that any deviation from the contract documents has been reviewed and found to be acceptable. Production will not commence until receipt of signed, approved shop drawings.		10			
		9			
		8			
		7			
		6			
		5			
		4			
		3			
		2			
This drawing contains information proprietary to CONCRETE SYSTEMS, INC. This drawing is disclosed with the understanding that it will be retained in confidence and its use limited solely to the purpose for which it is disclosed. It is understood that no reproduction of this drawing is authorized without permission from CONCRETE SYSTEMS, INC. and that it will be returned to CONCRETE SYSTEMS, INC. upon request.	1	09/13/2021	REVISED REINFORCING	YAA	
	Rev.	Date	DESCRIPTION	By	
			REVISIONS		

This drawing is based upon information provided from the following documents and/or sources:

Engineer: MEDOT
Project No: N/A
Drawings: SNOW SCOOTER BRIDGE SHEET 2 OF 7

Specifications: SPECIAL PROVISION SECTION 534 PRECAST STRUCTURAL CONCRETE

Other Sources: N/A

FEDERAL AID PROJECT NO. 1891500

STATE AGENCY

MEDOT

STATE OF MAINE
SNOW SCOOTER BRIDGE
BREWER - EDDINGTON, ME

Concrete Systems Inc.
9 Commercial St., Hudson, NH, 03051
Phone 603-889-4163
Fax 603-889-2417

Drawn By YAA Date 08/10/2021

Reviewed by MRS Date 08/12/2021

Approved By _____ Date _____

D

INDIVIDUAL PIECE SHOP DRAWING A8

Drawing No. C24548-A8

REV
1

Quantity: 1

Project No: WIN 018915.50

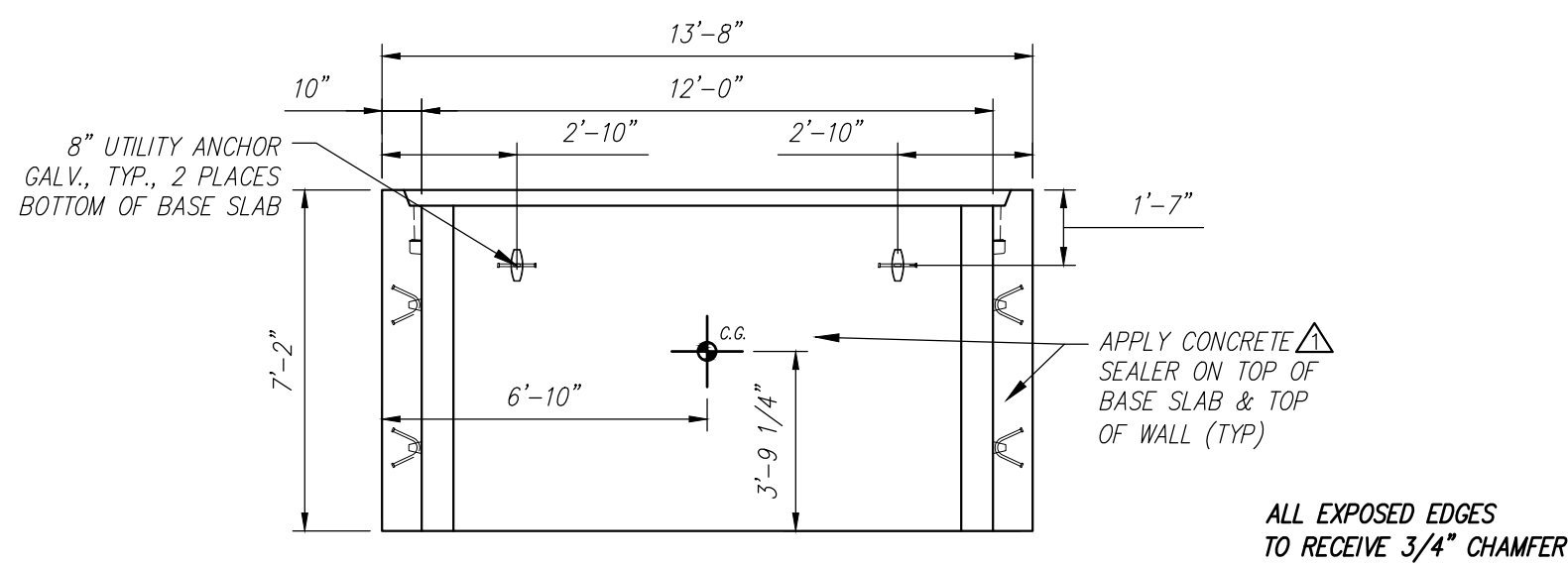
SHEET 12 OF 14

Rebar Schedule				
MK		QTY	LENGTH	
503	#5	14	3' - 0"	
602	#6	34	13' - 7"	MAX.

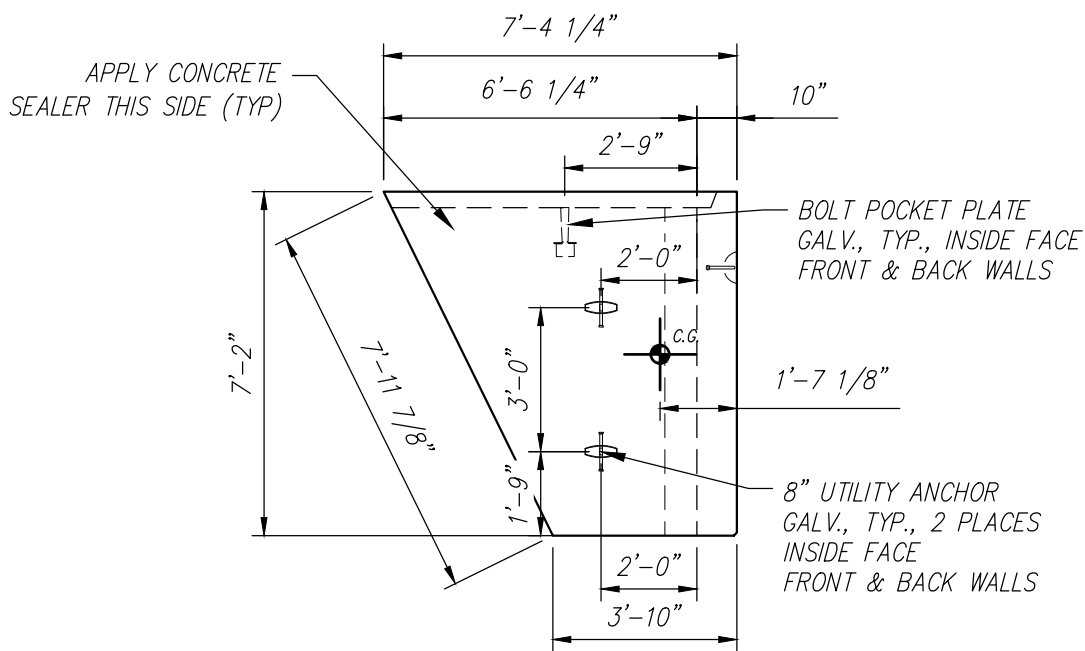
[illegible]

A10 - BILL OF MATERIALS / EMBEDS				
CSI ID#	DESCRIPTION	QTY	UM	COMMENTS
DTJ	CERTI-VEX PENSEAL 244-100%	1.3	GA	
EM-00125	BOLT POCKET PLATES (GALVANIZED)	4	EA	
EM-00033	3" FOAM CORE PVC	5.83	FT	
EM-00115	8" UTILITY ANCHOR - GALVANIZED	6	EA	
JS-00002	1"X1"CLOSED NEOP GASKET	28.33	FT	AROUND BELL
RM-00015	REBAR #5 BLACK-GR 60 40'	44	LB	
RM-00017	REBAR #6 BLACK-GR 60 40'	528	LB	
RM-00098	WIRE MESH ALL SIZES	635	LB	TOTAL WEIGHT
MX-FA5000SC30	MIX DESIGN - FLY ASH 5000 SELF COMPACTIN	5.08	CY	

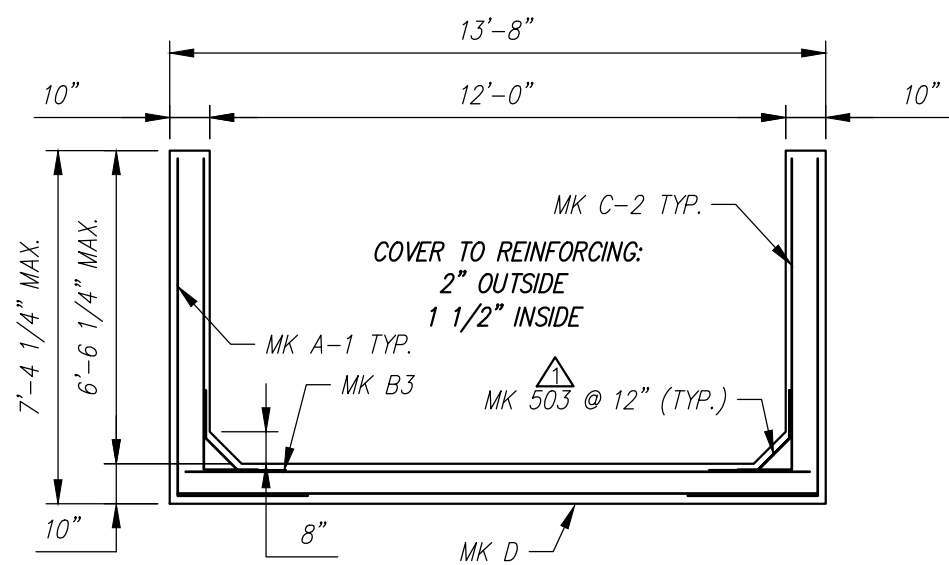
Rebar Schedule			
MK	QTY	LENGTH	
503 #5	14	3'-0"	0"
601 #6	34	10'-0"	4" MAX.



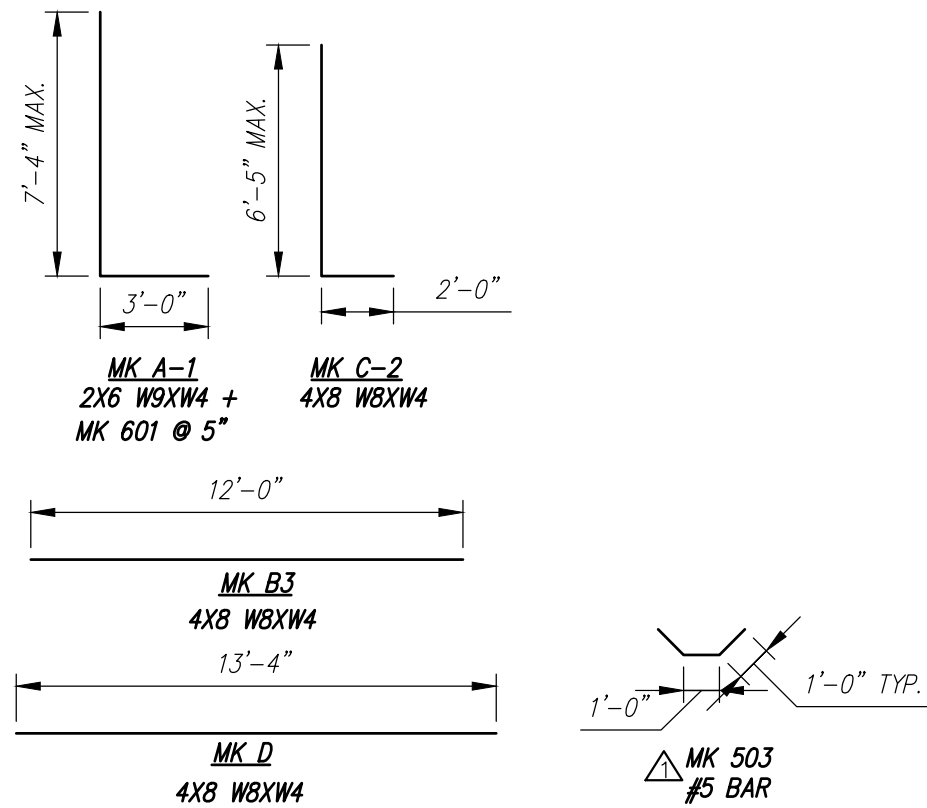
PLAN VIEW
Scale: 1/4" = 1'-0"



SIDE VIEW
Scale: 1/4" = 1'-0"

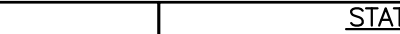


REINFORCING DETAIL
Scale: 1/4" = 1'-0"



BENDING SCHEDULE
Scale: N.T.S.

STATE OF MAINE DEPARTMENT OF TRANSPORTATION	
<input checked="" type="checkbox"/> REVIEWED	<input type="checkbox"/> REVIEWED WITH COMMENTS
<input type="checkbox"/> REJECTED	<input type="checkbox"/> REVISE AND RESUBMIT
Sep 22, 2021	
THIS DOCUMENT WAS REVIEWED IN ACCORDANCE WITH STATE OF MAINE SPECIFICATION SECTION 105.7 WORKING DRAWINGS	
	Transportation Engineer II
NAME	TITLE

Contractor is to verify that all information shown on drawings has been thoroughly checked, complies with the contract documents and is adequate to meet the field conditions. Some dimensions and details may differ slightly from contract drawings to accommodate the manufacturing or design process. Approval of this drawing indicates that any deviation from the contract documents has been reviewed and found to be acceptable. Production will not commence until receipt of signed, approved shop drawings.	10						This drawing is based upon information provided from the following documents and/or sources: Engineer: MEDOT Project No: N/A Drawings: SNOW SCOOTER BRIDGE SHEET 2 OF 7 Specifications: SPECIAL PROVISION SECTION 534 PRECAST STRUCTURAL CONCRETE Other Sources: N/A	 Concrete Systems Inc. 9 Commercial St., Hudson, NH,03051 Phone 603-889-4163 Fax 603-889-2417	STATE AGENCY MEDOT		STATE OF MAINE SNOW SCOOTER BRIDGE BREWER — EDDINGTON, ME			
	9													
	8													
	7													
	6													
	5													
	4													
	3													
	2													
	1	09/13/2021	REVISED REINFORCING & REMOVE 3"Ø IN BASE SLAB	YAA										
Rev.	Date	DESCRIPTION	By											
		REVISIONS												

FEDERAL AID PROJECT NO. 1891500									
Drawing No.		INDIVIDUAL PIECE SHOP DRAWING A10		REV 1					
		C24548-A10							
Quantity: 1	Project No: WIN 018915.50			SHEET 14 OF 14					